



SABER BAR 6

6-head Pinspot Lighting System

The Saber Bar 6 is a 6-head pinspot lighting system mounted on a 1-meter linear base with built-in power and DMX connections. Each pinspot is similar to the Saber Spot WW with a 15W Warm White LED (3100K) and an ACL lens that produces a razor sharp 5-degree beam. Each fixture's X/Y axis may be individually adjusted manually for precision angling of the beams. The fixture includes a 10-degree and 45-degree lens kits so that designers can change the beam angle depending on the application. There are two heavy duty adjustable brackets to mount the fixture to a ceiling or truss.

The rear panel features a display with function buttons, 3-pin and 5-pin DMX In/Out to link data and power locking In/Out connections to daisy chain power. There are multiple DMX channel modes to choose from, built-in programs and 6 dimming curve modes. The Saber Bar 6 is ideal for performance stages, installations, table spotting and lighting in retail stores.





SABER BAR 6



Light Source:

- LED: 6x 15W Warm White LEDs (50,000 hr.)
- Color Temperature: 3100K
- CRI: 96
- Beam Angle: 5-degrees (Includes 10-degree and 45-degree lens kits)

Features:

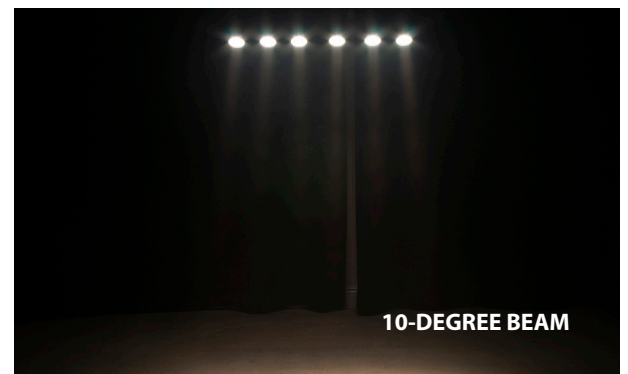
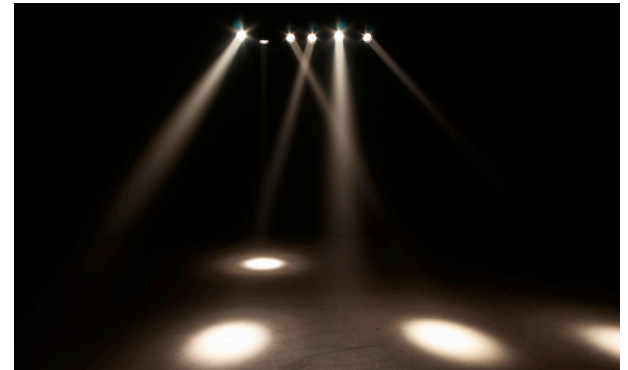
- All metal construction with black housing
- ACL lens for razor sharp beams
- Includes heavy duty adjustable brackets for hanging
- Individually adjust X/Y axis of each fixture manually

Construction:

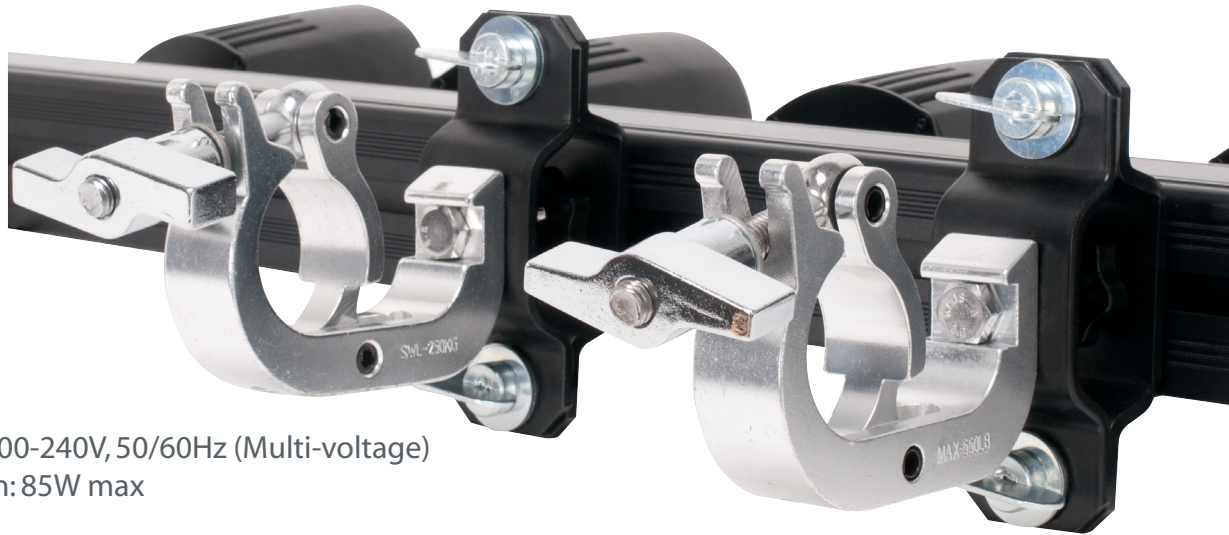
- Display with function buttons
- Data In/Out: 3-pin and 5-pin DMX In/Out to link data
- Power locking In/Out connections to daisy chain power
- Daisy chain up to 11 fixtures @ 120V; 12 fixtures @ 240V

Control:

- Multiple DMX channel modes
- Control Modes: DMX512, RDM
- Built-in internal programs
- 0-100% Dimming + smooth 16-bit fine dimming
- 6 Dimming Curve Modes
- Adjustable LED refresh rate
- Strobe & Pulse effects
- With Wired Digital Communication Network



SABER BAR 6



Electrical:

- Power voltage: AC100-240V, 50/60Hz (Multi-voltage)
- Power consumption: 85W max

Dimensions & Weight:

- Dimension (LxWxH): 39.5" x 11.5" x 3.75" / 1005x292x95mm
- Weight: 25 lbs. / 11.3 kg.

What's In The Box:

- 1x powerCON cable
- 1x Safety Cable
- 2x Omega Brackets
- 6x 10-degree frost filters
- 6x 45-degree frost filters

