



Light efficiency:

33 Lumen/Watt

Light quality:

CRI: 96.9

Color temperature:

2968 K

Output: 1373 lm

Peak: 21165 cd

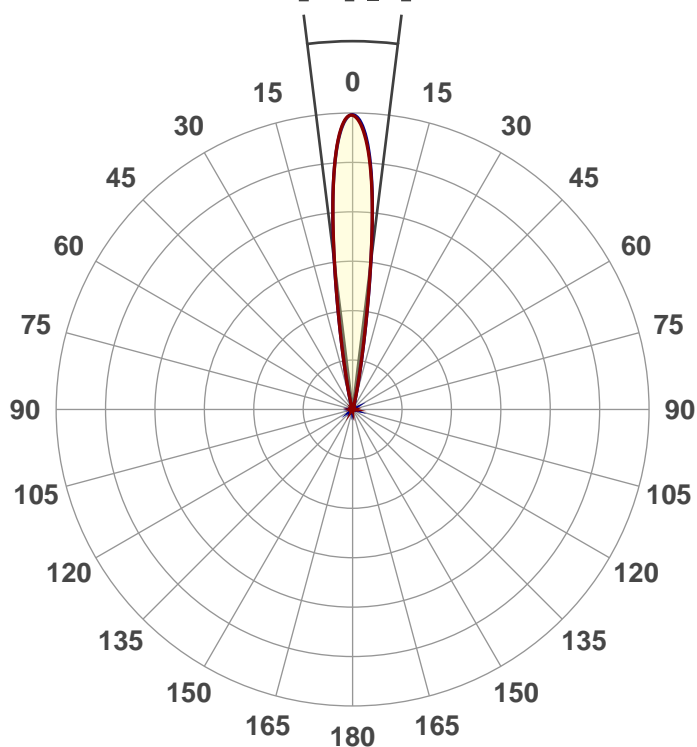
Power: 41.9 W

PF: 0.6



Beam angle

14.1°



Product name:

Encore FR50Z

Item number:

Zoom In

Date:

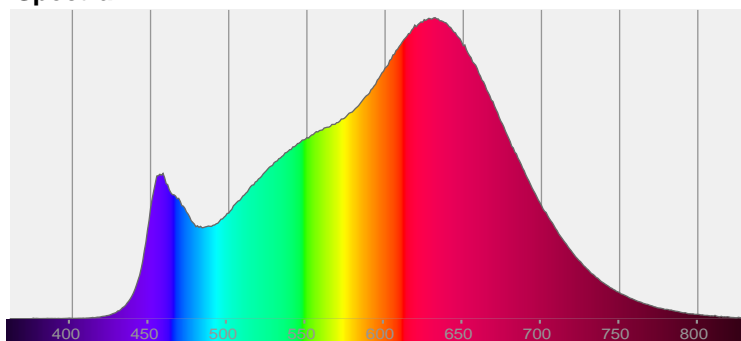
10/9/2017

Description:

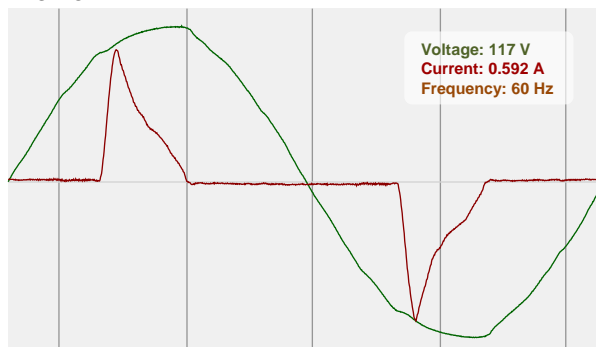


CIE 1931  
x: 0.438  
y: 0.401

Spectra

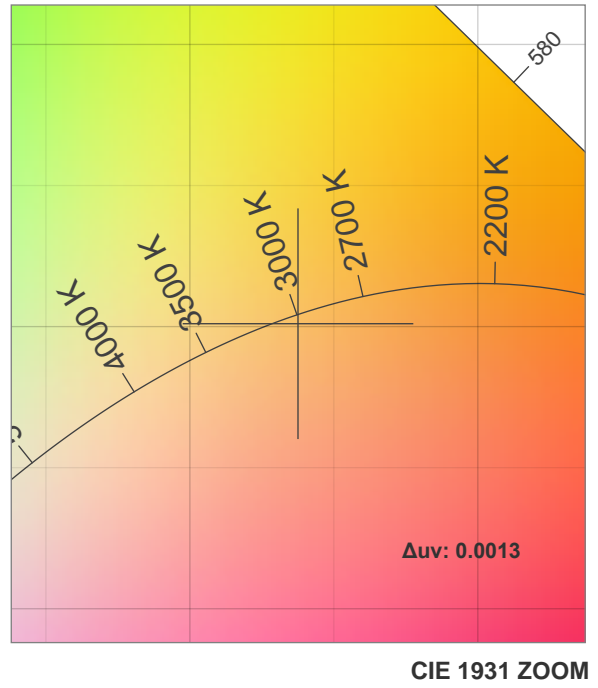
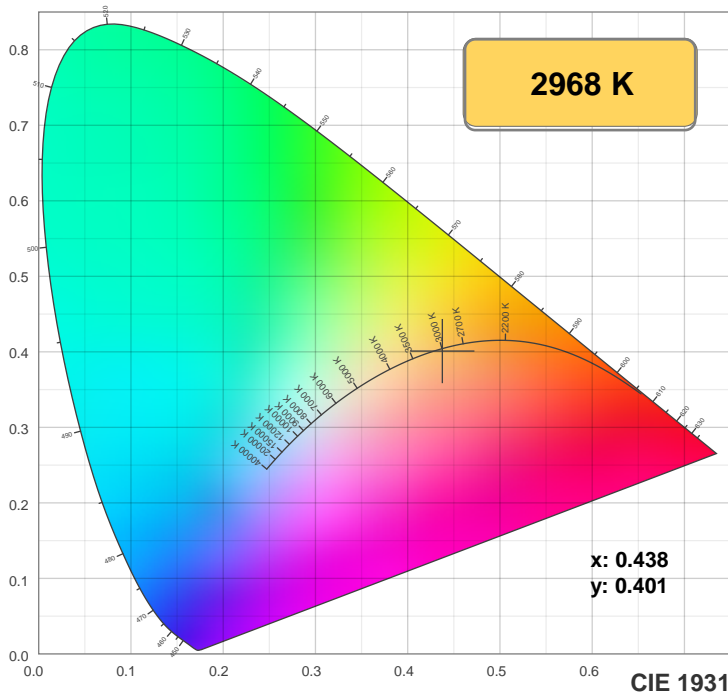


Power

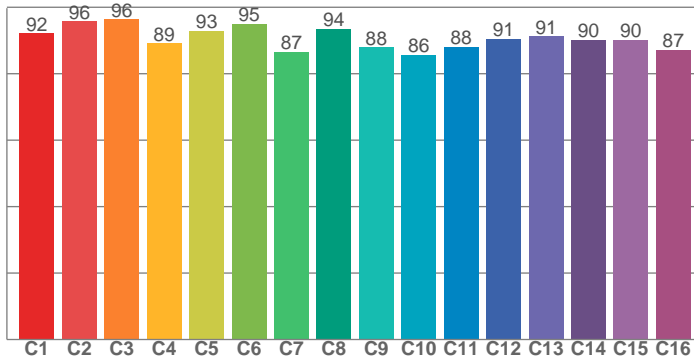


Voltage: 117 V  
Current: 0.592 A  
Frequency: 60 Hz

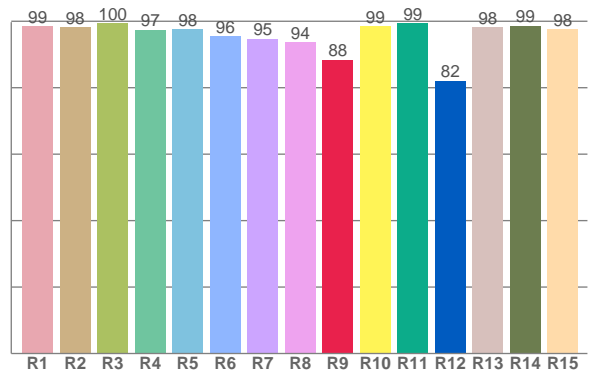
## Color details



**TM30: 90.8**



**CRI: 96.9 (R1-R8)**



**CRI R values, only R1-R8 are used to calculate final CRI value**

R1	R2	R3	R4	R5	R6	R7	R8	R9	R10	R11	R12	R13	R14	R15
98.5	98.1	99.5	97.5	97.6	95.5	94.8	93.6	88.4	98.5	99.4	82.1	98.3	98.7	97.7

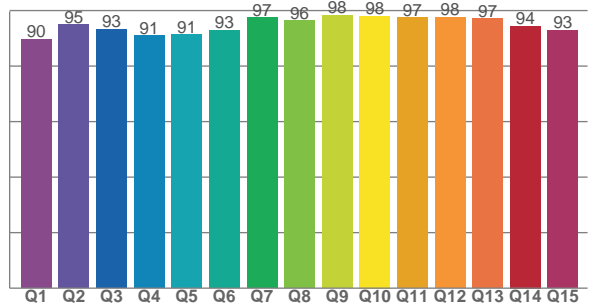
**TM30 C values, 16 binned values out of total of 99 C values**

C1	C2	C3	C4	C5	C6	C7	C8	C9	C10	C11	C12	C13	C14	C15	C16
92.1	95.8	96.3	89.1	92.9	95.0	86.6	93.5	87.9	85.6	88.2	90.6	91.2	90.2	90.2	87.2

**CQS Q values**

Q1	Q2	Q3	Q4	Q5	Q6	Q7	Q8	Q9	Q10	Q11	Q12	Q13	Q14	Q15
89.7	94.9	93.3	91.0	91.4	92.9	97.5	96.5	98.3	98.0	97.5	97.6	97.1	94.4	92.9

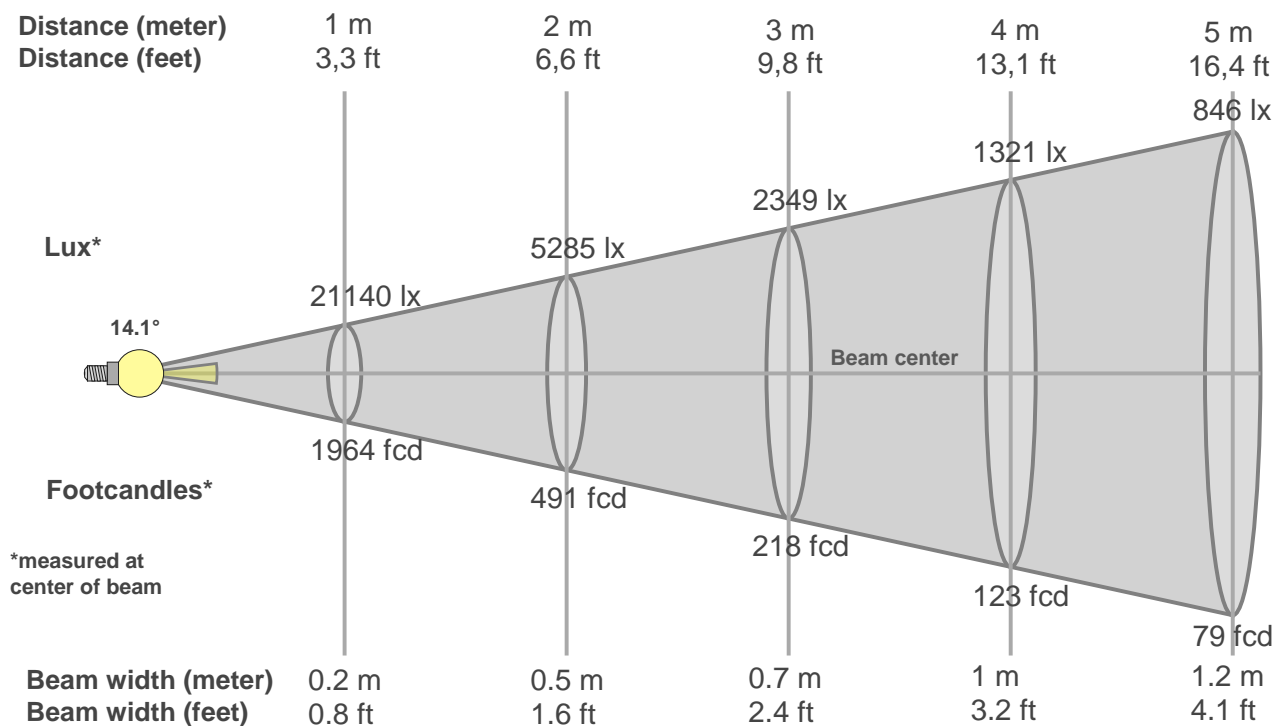
**CQS: 93.9**



## Color parameters

Color temperature	Color rendering index	Red component	Color fidelity	Color gamut	Color quality scale	Color coordinate cie 1931	Color coordinate cie 1931	Color coordinate	Color coordinate	Color divition from black body
CCT	CRI	CRI R9	TM30 Rf	TM30 Rg	CQS	x	y	u	v	$\Delta uv$
2968 K	96.9	88.4	90.8	98.2	93.9	0.438	0.401	0.252	0.347	0.0013

## Beam details



### Beam intensities from 1-20m

1m	2m	3m	4m	5m	6m	7m	8m	9m	10m	11m	12m	13m	14m	15m	16m	17m	18m	19m	20m
3.3ft	6.6ft	9.8ft	13.1ft	16.4ft	19.7ft	23ft	26.2ft	29.5ft	32.8ft	36.1ft	39.4ft	42.7ft	45.9ft	49.2ft	52.5ft	55.8ft	59.1ft	62.3ft	65.6ft
21140lx	5285lx	2349lx	1321lx	846lx	587lx	431lx	330lx	261lx	211lx	175lx	147lx	125lx	108lx	94lx	83lx	73lx	65lx	59lx	53lx
1964fcd	491fcd	218.2fcd	122.7fcd	78.6fcd	54.6fcd	40.1fcd	30.7fcd	24.2fcd	19.6fcd	16.2fcd	13.6fcd	11.6fcd	10fcd	8.7fcd	7.7fcd	6.8fcd	6.1fcd	5.4fcd	4.9fcd

### Intensities in 0° c-plane

0°	1°	2°	3°	4°	5°	6°	7°	8°	9°	10°	11°	12°	13°	14°	15°	16°	17°	18°	19°
21.1K	21.0K	20.5K	19.5K	18.0K	16.0K	13.5K	10.7K	8.0K	5.7K	3.9K	2.7K	1.8K	1.2K	0.8K	0.6K	0.4K	0.3K	0.2K	0.2K
100%	99%	97%	92%	85%	76%	64%	51%	38%	27%	19%	13%	8%	6%	4%	3%	2%	1%	1%	1%

### Intensities in 90° c-plane

0°	1°	2°	3°	4°	5°	6°	7°	8°	9°	10°	11°	12°	13°	14°	15°	16°	17°	18°	19°
21.1K	21.0K	20.4K	19.4K	17.9K	15.9K	13.5K	10.8K	8.1K	5.7K	3.9K	2.7K	1.8K	1.2K	0.9K	0.6K	0.4K	0.3K	0.2K	0.2K
100%	99%	97%	92%	85%	75%	64%	51%	38%	27%	19%	13%	9%	6%	4%	3%	2%	1%	1%	1%

### Intensities in 180° c-plane

0°	1°	2°	3°	4°	5°	6°	7°	8°	9°	10°	11°	12°	13°	14°	15°	16°	17°	18°	19°
21.1K	20.8K	20.2K	19.2K	17.7K	15.9K	13.4K	10.7K	8.0K	5.7K	3.9K	2.6K	1.8K	1.2K	0.8K	0.6K	0.4K	0.3K	0.2K	0.2K
100%	99%	96%	91%	84%	75%	64%	51%	38%	27%	18%	12%	8%	6%	4%	3%	2%	1%	1%	1%

### Intensities in 270° c-plane

0°	1°	2°	3°	4°	5°	6°	7°	8°	9°	10°	11°	12°	13°	14°	15°	16°	17°	18°	19°
21.1K	21.0K	20.4K	19.4K	17.9K	16.0K	13.5K	10.8K	8.1K	5.8K	4.0K	2.7K	1.9K	1.2K	0.9K	0.6K	0.4K	0.3K	0.2K	0.1K
100%	99%	96%	92%	85%	75%	64%	51%	38%	27%	19%	13%	9%	6%	4%	3%	2%	1%	1%	1%

Beam angle 50%	Field angle 10%	Cutoff angle 2,5%	Intensity ratio in 120° cone	Intensity ratio in 90° cone
14.1°	23.2°	30.5°	99.2%	98.9%