

COB CANNON WASH

COB CANNON WASH PEARL

User Instructions

©2022 ADJ Products, LLC all rights reserved. Information, specifications, diagrams, images, and instructions herein are subject to change without notice. ADJ Products, LLC logo and identifying product names and numbers herein are trademarks of ADJ Products, LLC. Copyright protection claimed includes all forms and matters of copyrightable materials and information now allowed by statutory or judicial law or hereinafter granted. Product names used in this document may be trademarks or registered trademarks of their respective companies and are hereby acknowledged. All non-ADJ Products, LLC brands and product names are trademarks or registered trademarks of their respective companies.

ADJ Products, LLC and all affiliated companies hereby disclaim any and all liabilities for property, equipment, building, and electrical damages, injuries to any persons, and direct or indirect economic loss associated with the use or reliance of any information contained within this document, and/or as a result of the improper, unsafe, insufficient and negligent assembly, installation, rigging, and operation of this product.

ADJ PRODUCTS LLC World Headquarters

6122 S. Eastern Ave. | Los Angeles, CA 90040 USA

Tel: 800-322-6337 | Fax: 323-582-2941 | www.adj.com | lsupport@adj.com

ADJ Supply Europe B.V.

Junostraat 2 | 6468 EW Kerkrade | Netherlands

Tel: +31 45 546 85 00 | Fax: +31 45 546 85 99 | www.americandj.eu | service@americandj.eu

Europe Energy Saving Notice

Energy Saving Matters (EuP 2009/125/EC)

Saving electric energy is a key to help protecting the environment. Please turn off all electrical products when they are not in use. To avoid power consumption in idle mode, disconnect all electrical equipment from power when not in use. Thank you!

DOCUMENT VERSION



Due to additional product features and/or enhancements, an updated version of this document may be available online.

Please check www.adj.com for the latest revision/update of this manual before beginning installation and/or programming.

Date	Document Version	Software Version	DMX Channel Mode	Notes
01/15/15	1	1.01	3/4/5/6/7/9/10	Initial Release
03/23/21	2	1.06	NO CHANGE	Updated System Menu
03/14/22	3	N/C	NO CHANGE	Added Pearl

CONTENTS

General Information	4
Limited Warranty (USA Only)	5
Safety Guidelines	6
Maintenance Guidelines	7
Overview	8
DMX Setup	9
Installation Instructions	11
System Menu	13
DMX Traits: Channel Functions & Values	18
Color Macro Chart	22
Photometric Chart	23
Dimmer Curve Chart	24
UC IR Control and Airstream Control	25
Multiple Unit Power Linking	26
Primary / Secondary Setup	26
Optional Lens / Fuse Replacement / Cleaning	26
Troubleshooting Tips and FAQ	27
Specifications	28
Optional Accessories	30

GENERAL INFORMATION

INTRODUCTION

Please read and understand all instructions in this manual carefully and thoroughly before attempting to operate these products. These instructions contain important safety and use information.

UNPACKING

The products in this kit have been thoroughly tested and have been shipped in perfect operating condition. Carefully check the shipping carton for damage that may have occurred during shipping. If the carton appears to be damaged, carefully inspect each unit included for damage and be sure all accessories necessary to operate the units have arrived intact. In the event damage has been found or parts are missing, please contact our customer support team for further instructions. Please do not return this kit to your dealer without first contacting customer support at the number listed below. Please do not discard the shipping carton in the trash. Please recycle whenever possible.

WARRANTY RETURNS

All returned service items whether under warranty or not, must be freight pre-paid and accompany a return authorization (R.A.) number. The R.A. number must be clearly written on the outside of the return package. A brief description of the problem as well as the R.A. number must also be written down on a piece of paper and included in the shipping container. If the unit is under warranty, you must provide a copy of your proof of purchase invoice. Items returned without a R.A. number clearly marked on the outside of the package will be refused and returned at customer's expense. You may obtain a R.A. number by contacting customer support.

LIMITED WARRANTY (USA ONLY)

- A. ADJ Products, LLC hereby warrants, to the original purchaser, ADJ Products, LLC products to be free of manufacturing defects in material and workmanship for a prescribed period from the date of purchase (see specific warranty period on reverse). This warranty shall be valid only if the product is purchased within the United States of America, including possessions and territories. It is the owner's responsibility to establish the date and place of purchase by acceptable evidence, at the time service is sought.
- B. For warranty service, you must obtain a Return Authorization number (RA#) before sending back the product-please contact ADJ Products, LLC Service Department at 800-322-6337. Send the product only to the ADJ Products, LLC factory. All shipping charges must be pre-paid. If the requested repairs or service (including parts replacement) are within the terms of this warranty, ADJ Products, LLC will pay return shipping charges only to a designated point within the United States. If the entire instrument is sent, it must be shipped in its original package. No accessories should be shipped with the product. If any accessories are shipped with the product, ADJ Products, LLC shall have no liability whatsoever for loss of or damage to any such accessories, or for the safe return thereof.
- C. This warranty is void if the serial number has been altered or removed; if the product is modified in any manner which ADJ Products, LLC concludes, after inspection, affects the reliability of the product, if the product has been repaired or service by anyone other than ADJ Products, LLC factory unless prior written authorization was issued to purchaser by ADJ Products, LLC; if the product is damaged because not properly maintained as set forth in the instruction manual.
- D. This is not a service contract, and this warranty does not include maintenance, cleaning or periodic check up. During the period specified above, ADJ Products, LLC will replace defective parts at its expense with new or refurbished parts, and will absorb all expenses for warranty service and repair labor by reason of defects in material or workmanship. The sole responsibility of ADJ Products, LLC under this warranty shall be limited to the repair of the product, or replacement thereof, including parts, at the sole discretion of ADJ Products, LLC. All products covered by this warranty were manufactured after August 15, 2012, and bear identifying marks to that effect.
- E. ADJ Products, LLC reserves the right to make changes in design and/or improvements upon its products without any obligation to include these changes in any products theretofore manufactured.
- F. No warranty, whether expressed or implied, is given or made with respect to any accessory supplied with products described above. Except to the extent prohibited by applicable law, all implied warranties made by ADJ Products, LLC in connection with this product, including warranties of merchantability or fitness, are limited in duration to the warranty period set forth above. And no warranties, whether expressed or implied, including warranties of merchantability or fitness, shall apply to this product after said period has expired. The consumer's and/or Dealer's sole remedy shall be such repair or replacement as is expressly provided above; and under no circumstances shall ADJ Products, LLC be liable for any loss or damage, direct or consequential, arising out of the use of, or inability to use, this product.
- G. This warranty is the only written warranty applicable to ADJ Products, LLC Products and supersedes all prior warranties and written descriptions of warranty terms and conditions heretofore published.

LIMITED WARRANTY PERIODS

- **Non L.E.D. Lighting Products = 1-year (365 days) Limited Warranty** (Such as: Special Effect Lighting, Intelligent Lighting, UV lighting, Strobes, Fog Machines, Bubble Machines, Mirror Balls, Par Cans, Trussing, Lighting Stands etc. excluding LED and lamps)
- **Laser Products = 1 Year (365 Days) Limited Warranty** (excludes laser diodes which have 6 month limited warranty)
- **L.E.D. Products = 2-year (730 days) Limited Warranty** (excluding batteries which have a 180 day limited warranty)
Note: 2 Year Warranty only applies to purchases within the United States.
- **StarTec Series = 1 Year Limited Warranty** (excluding batteries which have a 180 day limited warranty)
- **ADJ DMX Controllers = 2 Year (730 Days) Limited Warranty**

SAFETY INSTRUCTIONS AND GUIDELINES

To guarantee a smooth operation, it is important to follow all instructions and guidelines in this manual. ADJ PRODUCTS LLC is not responsible for injury and/or damages resulting from the misuse of these devices due to the disregard of the information printed in this manual. Only qualified and/or certified personnel should perform installation of these devices and only the original rigging parts included with these devices should be used for installation. Any modifications to these devices and/or the included mounting hardware will void the original manufactures warranty and increase the risk of damage and/or personal injury.



PROTECTION CLASS 1 – DEVICES MUST BE PROPERLY GROUNDED



THERE ARE NO USER SERVICEABLE PARTS INSIDE THESE DEVICES. DO NOT ATTEMPT ANY REPAIRS YOURSELF; DOING SO WILL VOID YOUR MANUFACTURES WARRANTY. DAMAGES RESULTING FROM MODIFICATIONS TO THESE DEVICES AND/OR THE DISREGARD OF SAFETY INSTRUCTIONS AND GUIDELINES IN THIS MANUAL VOID THE MANUFACTURES WARRANTY AND ARE NOT SUBJECT TO ANY WARRANTY CLAIMS AND/OR REPAIRS.



**DO NOT PLUG THIS UNIT INTO A DIMMER PACK!
DO NOT REMOVE THE COVER UNDER ANY CONDITIONS!
NEVER OPERATE THIS UNIT WITH THE COVER REMOVED!
UNPLUG POWER DURING LONG PERIODS OF NON-USE
NEVER TOUCH LIGHT DURING OPERATION, AS IT MAY BE HOT!
KEEP FLAMMABLE MATERIALS AWAY FROM THESE DEVICES!
DO NOT EXCEED OPERATING TEMPERATURES OF 185°F (85°C)!**



**INDOOR / DRY LOCATIONS USE ONLY!
DO NOT EXPOSE DEVICES TO RAIN AND/OR MOISTURE!**



**NEVER LOOK DIRECTLY INTO THE LIGHT SOURCE!
RETINA INJURY RISK - MAY INDUCE BLINDNESS!
SENSITIVE PERSONS MAY SUFFER AN EPILEPTIC SHOCK!**

SAFETY INSTRUCTIONS AND GUIDELINES

DO NOT position devices close to any FLAMMABLE MATERIALS while operating.

DO NOT attempt installation and/or operation of devices without knowledge how to do so.

DO NOT permit operation by persons who are not qualified to operate these types of devices.

DO NOT shake devices, avoid brute force when installing and/or operating.

DO NOT operate these devices if the main power cord has become frayed, crimped and/or damaged. Replace any damaged power cords with a similar power rating.

DO NOT remove or break-off the ground plug from the device power cords.

DO NOT remove disassemble devices, there are NO user serviceable parts inside.

ALWAYS disconnect devices from main power source before performing any cleaning.

ALWAYS disconnect light from main power before replacing lamp.

ALWAYS be sure to install these devices in an area that will allow proper ventilation.

NEVER remove the ground prong from the power cable.

Power cords should be safely routed and secured so they are not likely pinched.

Disconnect power cords during long periods of non-use.

Only use recommended rigging hardware as described in this guide.

Use the original packaging and materials to transport these devices in for service.

These devices should be serviced by qualified service personnel when:

- The power cords or plugs have become damaged.
- Objects have fallen on and/or liquid has spilled into the devices.
- The devices have been exposed to rain and/or moisture.
- The devices do not operate normally or exhibit a marked change in performance.

MAINTENANCE GUIDELINES



DISCONNECT POWER BEFORE PERFORMING ANY MAINTENANCE!

CLEANING

Frequent cleaning is recommended to insure proper function, optimized light output, and an extended life. The frequency of cleaning depends on the environment in which the device operates in: damp, smoky or particularly dirty environments can cause greater accumulation of dirt on the lens and/or light fixture optics. Clean the external housing of the fixture and the front lens of the light at least every 20 days with a soft cloth to avoid dirt/debris accumulation.

NEVER use alcohol, solvents, or ammonia-based cleaners.

MAINTENANCE

Regular inspections are recommended to insure proper function and extended life.

There are no user serviceable parts inside these devices, please refer all other service issues to an authorized ADJ service technician. Should you need any spare parts, please order genuine parts from your local ADJ dealer.

Please refer to the following points during routine inspections:

A detailed review by an approved electrical engineer every three months, to make sure the circuit contacts are in good condition and prevent overheating.

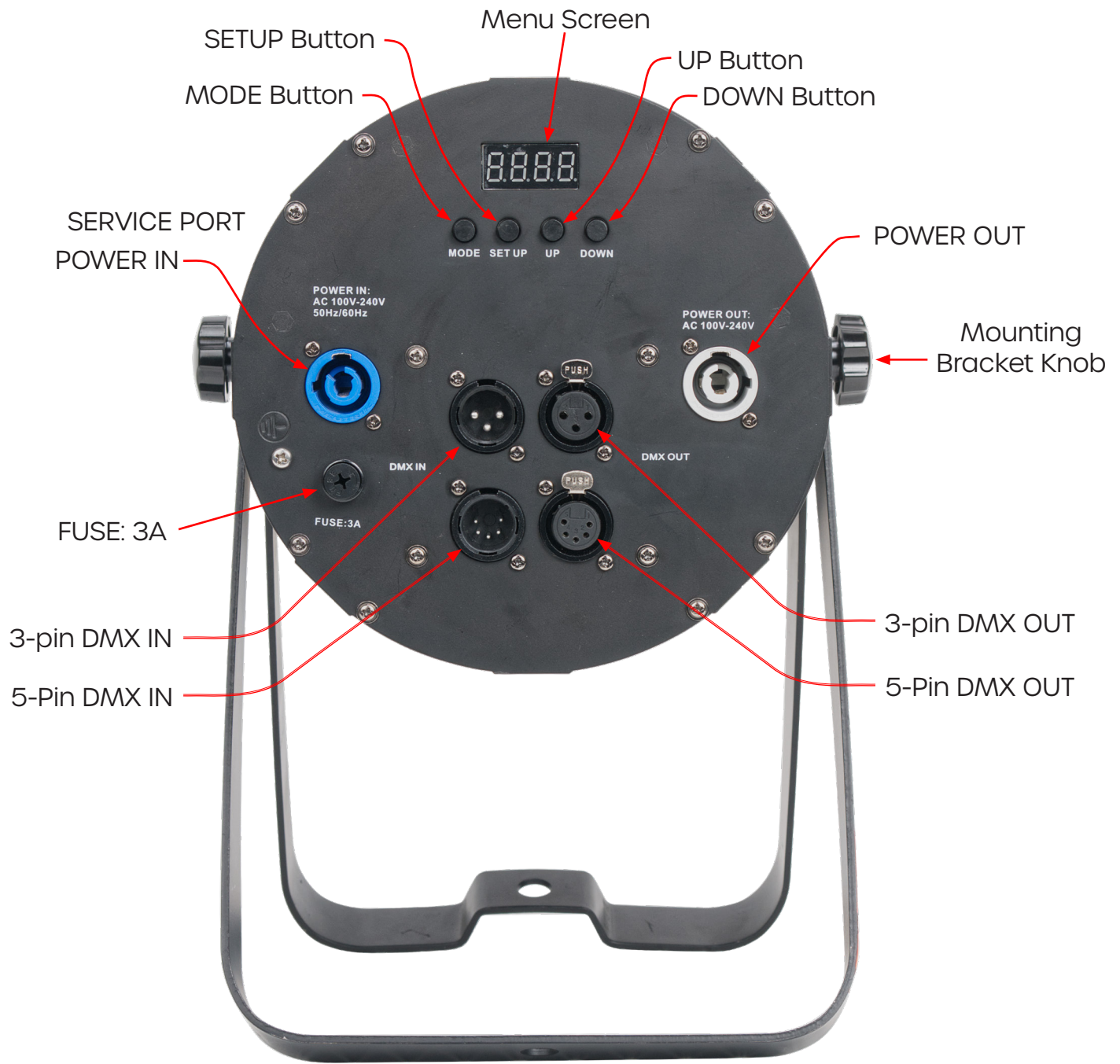
Be sure all screws and fasteners are securely tightened at all times. Loose screws may fall out during normal operation resulting in damage or injury as larger parts could fall.

Check for any deformations on the light, light-housings, lenses, rigging hardware, and rigging points (ceiling, suspension, trussing). Deformations could allow for dust to enter into the devices. Damaged rigging points or unsecured rigging could cause the devices to fall and seriously injure a person(s).

Electric power supply cables must not show any damage, material fatigue or sediments.

OVERVIEW

MENU	To select the programming functions
SET UP	To go forward in the selected functions
UP	To go backward in the selected functions
DOWN	To go forward in the selected functions



DMX SETUP

POWER SUPPLY

The Cob cannon wash contains an automatic voltage switch, which will auto sense the voltage when it is plugged into the power source. With this switch there is no need to worry about the correct power voltage, this unit can be plugged in anywhere.

DMX-512

DMX is short for Digital Multiplex. This is a universal protocol used by most lighting and controller manufactures as a form of communication between intelligent fixtures and controllers. A DMX controller sends DMX data instructions from the controller to the fixture. DMX data is sent as serial data that travels from fixture to fixture via the DATA “IN” and DATA “OUT” XLR terminals located on all DMX fixtures (most controllers only have a DATA “OUT” terminal).

DMX LINKING

DMX is a language allowing all makes and models of different manufactures to be linked together and operate from a single controller, as long as all fixtures and the controller are DMX compliant. To ensure proper DMX data transmission, when using several DMX fixtures try to use the shortest cable path possible. The order in which fixtures are connected in a DMX line does not influence the DMX addressing. For example, a fixture assigned a DMX address of 1 may be placed anywhere in a DMX line, at the beginning, at the end, or anywhere in the middle. Therefore, the first fixture controlled by the controller could be the last fixture in the chain. When a fixture is assigned a DMX address of 1, the DMX controller knows to send DATA assigned to address 1 to that unit, no matter where it is located in the DMX chain.

DATA CABLE (DMX CABLE) REQUIREMENTS

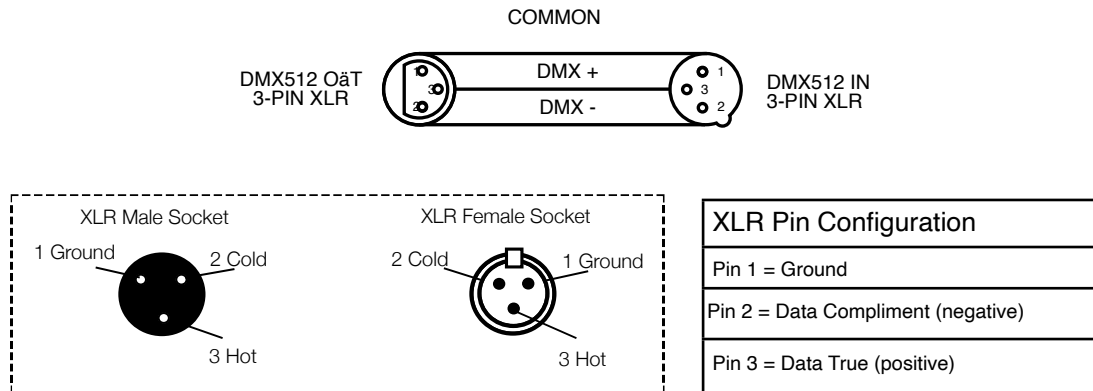
(FOR DMX AND PRIMARY/SECONDARY OPERATION):

The COB Cannon Wash can be controlled via DMX-512 protocol. The COB Cannon Wash has three DMX channel modes (1 channel mode, 2 channel mode, & 3 channel mode). The DMX address is set electronically using the controls on the rear panel of the unit. Your unit and your DMX controller require an approved DMX-512 110 Ohm Data cable for data input and data output (Figure 1). We recommend AccuCable DMX cables. If you are making your own cables, be sure to use standard 110-120 Ohm shielded cable (This cable be purchased at almost all professional sound and lighting stores). Your cables should be made with a male and female XLR connector on either end of the cable. Also remember that DMX cable must be daisy chained and cannot be split.



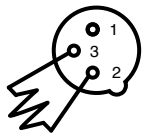
NOTICE

Be sure to follow figures two and three when making your own cables. Do not use the ground lug on the XLR connector. Do not connect the cable's shield conductor to the ground lug or allow the shield conductor to come in contact with the XLR's outer casing. Grounding the shield could cause a short circuit and erratic behavior.



SPECIAL NOTE: LINE TERMINATION

When longer runs of cable are used, you may need to use a terminator on the last unit to avoid erratic behavior. A terminator is a 110-120 ohm 1/4 watt resistor, which is connected between pins 2 and 3 of a male XLR connector (DATA + and DATA -). This unit is inserted in the female XLR connector of the last unit in your daisy chain to terminate the line. Using a cable terminator (ADJ part number Z-DMX/T) will decrease the possibilities of erratic behavior.



Termination reduces signal errors and avoids signal transmission problems and interference. It is always advisable to connect a DMX terminal, (Resistance 120 Ohm 1/4 W) between PIN 2 (DMX-) and PIN 3 (DMX+) of the last fixture. Figure 4

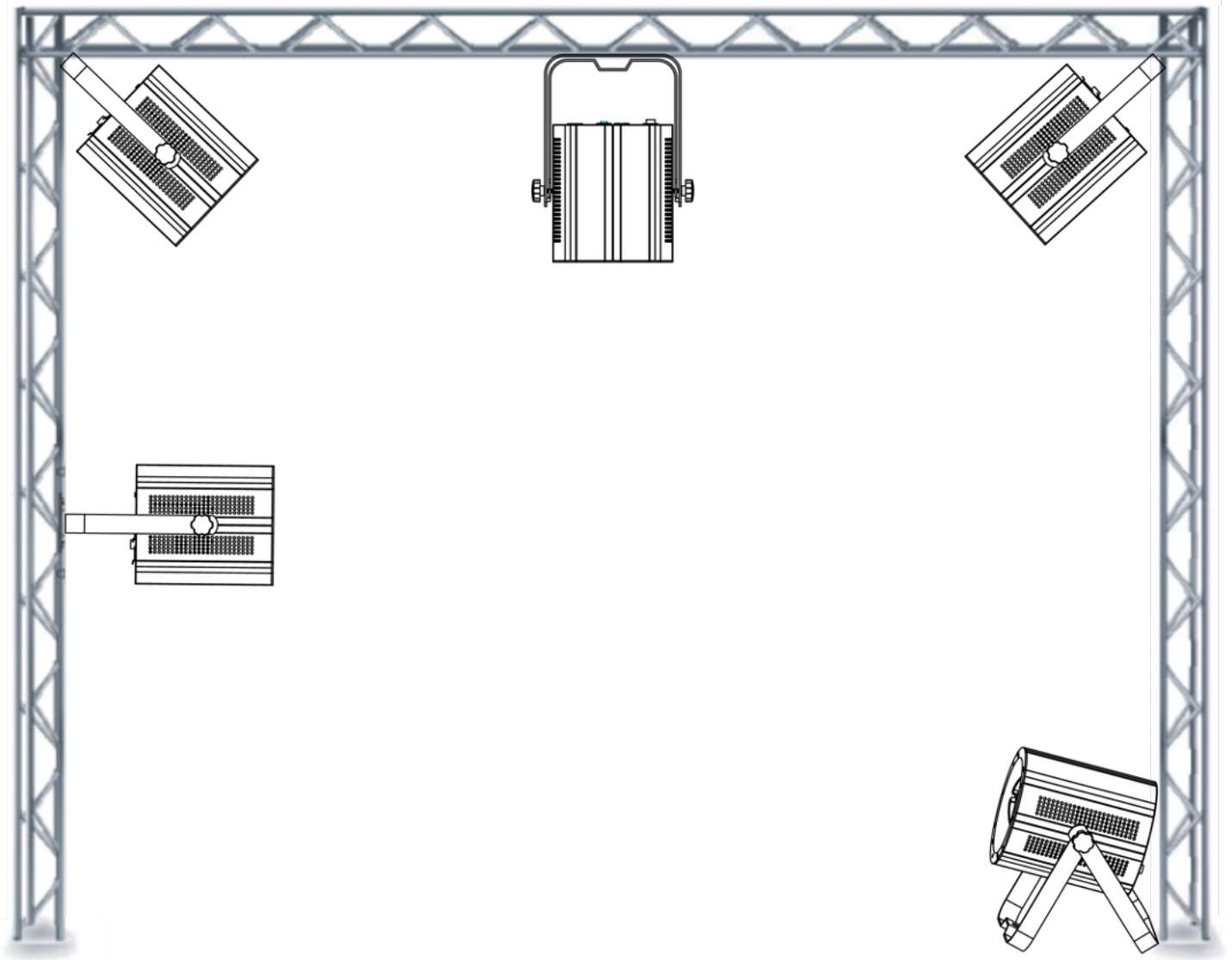
3-Pin XLR to 5-Pin XLR Conversion		
Conductor	3-Pin XLR Female (Out)	5-Pin XLR Male (In)
Ground/Sheld	Pin 1	Pin 1
Data Compliment (- signal)	Pin 2	Pin 2
Data True (+ signal)	Pin 3	Pin 3
Not Used		Do Not Use
Not Used		Do Not Use

5-Pin XLR DMX Connectors. Some manufactures use 5-pin DMX-512 data cables for DATA transmission in place of 3-pin. 5-pin DMX fixtures may be implemented in a 3-pin DMX line. When inserting standard 5-pin data cables in to a 3-pin line a cable adapter must be used, these adapters are readily available at most electric stores. The chart below details a proper cable conversion.

INSTALLATION INSTRUCTIONS

INSTALLATION

This unit should be mounted using a mounting clamp (not provided), affixing it to the mounting bracket that is provided with the unit. Always ensure that the unit is firmly fixed to avoid vibration and slipping while operating. Always ensure that the structure to which you are attaching the unit is secure and is able to support the weight of ten (10) times the unit's weight and any mounting accessories. A safety cable (optional) is recommended when installing the fixture. It is also recommended that a professional installs the equipment and it must be installed in a place where it is out of the reach of people's grasp.



SYSTEM MENU

MODES

The COB Cannon Wash has 5 modes: DMX Mode, Manual Dimmer Color Mode, Sound Active Mode, Auto Run Program Mode and Static Color Select Mode.

During operation, the display will lock after 30 seconds. To unlock the display, press and hold down the **MODE** button for 3 seconds to unlock.

MODE manual	SET UP manual	UP/DOWN manual	Instruction
DMX MODE	Address	<i>d.001 ~ d.512</i>	Sets the DMX starting address
	Channels	<i>Ch03</i>	The unit occupies 3 DMX channels
		<i>Ch04</i>	The unit occupies 4 DMX channels
		<i>Ch05</i>	The unit occupies 5 DMX channels
		<i>Ch06</i>	The unit occupies 6 DMX channels
		<i>Ch07</i>	The unit occupies 7 DMX channels
		<i>Ch09</i>	The unit occupies 9 DMX channels
		<i>Ch10</i>	The unit occupies 11 DMX channels
	NO DMX mode	<i>BLAc</i>	When DMX signal is lost or interrupted, the unit will default to BLACKOUT option. It will switch all LED's off
		<i>HLSt</i>	When DMX signal is lost or interrupted, the unit will default to HOLD option. It will hold the last state before signal was lost.
		<i>Prog</i>	When DMX signal is lost or interrupted, the unit will default to AUTO. It will run the internal programs.
	Delay mode	<i>dr-0 ~ dr-4</i>	Select the unit delay mode
SECONDARY MODE	Secondary mode	<i>SEEd</i>	Set the unit into secondary mode
DIMMER MODE	Red dimmer	<i>r.000 ~ r.255</i>	Adjust the intensity of the red color
	Green dimmer	<i>G.000 ~ G.255</i>	Adjust the intensity of the green color
	Blue dimmer	<i>b.000 ~ b.255</i>	Adjust the intensity of the blue color
	Amber dimmer	<i>A.000 ~ A.255</i>	Adjust the intensity of the amber color
	Flash	<i>FS.00 ~ FS.15</i>	Adjust the flash speed, FS.00 is flash off, FS.01 is slowest, FS.15 is fastest

MODE manual	SET UP manual	UP/DOWN manual	Instruction
SOUND MODE	Mode select	<i>S001 ~ S01b</i>	Select the 16 built-in sound modes
	Sensitivity select	<i>SJ-1 ~ SJ-8</i>	Adjust the sensitivity of the sound-active, SJ-1 is the lowest level, SJ-8 is the highest level
AUTO RUN MODE	Color Fade	<i>RFD1 ~ RF1b</i>	Select the 16 built-in dreaming mode
	Color Change	<i>RJD1 ~ RJ1b</i>	Select the 16 built-in jumping mode
	Color Fade & Color Change	<i>R-JF</i>	Set the light in auto dreaming & jumping mode, the dreaming mode and jumping mode will run in a continuous cycle
STATIC COLOR SELECT MODE	Color select	<i>CL00 ~ CLb4</i>	Select the 64 static colors
	Flash	<i>FS.00 ~ FS.15</i>	Adjust the flash speed, FS.00 is flash off, FS.01 is slowest, FS.15 is fastest
OTHER MODE	Display on/off	<i>don</i>	LED digital tube display always on
		<i>doFF</i>	LED digital tube display off
	RFC remote function on/off	<i>rFon</i>	RFC remote function on
		<i>rFoF</i>	RFC remote function off
	Display normal / inverse	<i>Stnd</i>	LED digital tube display normal
		<i>inv</i>	LED digital tube display inversion
	Initialization mode	<i>dEFA</i>	Initialize the unit at the extra factory setting

DMX Mode: Operating through a DMX controller gives the user the freedom to create their own programs tailored to their own individual needs. Press the **MODE** button to select the DMX mode.

DMX Addressing and Channel Mode: This function will allow you to control each individual fixture's traits with a standard DMX 512 controller. **(When a DMX Address is set, the LED display will flicker if there is no signal from the controller.)**

1. To run your fixture in DMX mode, press the **MODE** button until "d.XXX" is displayed. "XXX" represents the current displayed DMX address.
2. Use the **UP** or **DOWN** buttons to select your desired DMX address, then press the **SET UP** button to select your DMX Channel mode.
3. Use the **UP** or **DOWN** button to scroll through the DMX Channel modes (Ch03, Ch04, Ch05, Ch06, Ch07, Ch09, and Ch10).

No DMX Setup: This mode allows the unit to default to one of three modes if the DMX signal is lost or interrupted.

1. Press the **SET UP** button to select your setting.
2. Press the **UP** or **DOWN** button to select one of the three options.

BLACKOUT = "**blAc**". The unit will switch all LED's off if signal is lost.

HOLD = "**lASt**". The unit will hold the last state before the signal was lost.

AUTO = "**ProG**". The unit will run the default internal programs.

Delay Mode: Select the unit delay mode by pressing the SET UP button until "dr-X" is displayed. Press the Up or Down button to set the delay rate 0-4. After you have chosen your desired DMX Channel mode, plug in the fixture via the XLR connections to any standard DMX controller.

Secondary Mode: Press the MODE button to select the Secondary Mode.

Secondary mode will be displayed as "**SECd**".

Note, while in Secondary mode, the SET UP, UP and DOWN buttons will not function.

Manual Dimmer Color Mode: Press the **MODE** button to select the manual Dimmer Color Select mode. The Color Red will be displayed as "r.XXX" with "XX" representing the dimming rate of 0-255.

1. Press the SET UP button to select a different color; green "**GXXX**", blue "**bXXX**" or amber "**AXXX**".
2. Press the Up or Down button to set the dimming rate 0-255.

Flash Speed Select: Press **MODE** button to select the Flash Speed Select mode.

Flash Speed will be displayed as "**FS.XX**" with "XX" representing the flash speed rate.

1. Press the SET UP button to adjust the desired flash speed.
2. Press the Up or Down button to set the speed between "FS.00" (flash off), "FS.01" (slowest flash) and "FS.15" (fastest flash).

Sound Active Mode: In this mode the COB Cannon Wash will react to sound, and chase through the different colors. Press **MODE** button to select the Sound Active mode

Sound Active mode will be displayed as “**SoXX**” with “**XX**” representing Sound Active mode (1-8).

1. Press the **SET UP** button to adjust the sound sensitivity. “**SJ-X**” should be displayed.
2. Press the **UP** or **DOWN** button to adjust the sensitivity level from 1 (off) to 8 (highest).

Auto Run Program Mode: There are 3 types of Auto Run Modes to choose from; Color Fade, Color Change, and both modes running together. The running speed is adjustable in all 3 modes.

Press the **MODE** button until “**AFXX**”, “**AJXX**”, or “**A-JF**” is displayed.

- Color Fade mode = “**AFXX**”, there are 16 Color Fade modes to choose from.
Use the **UP** or **DOWN** button to scroll through the different Auto Fade modes.
- Color Change mode = “**AJXX**”, there are 16 Color Change modes to choose from.
Use the **UP** or **DOWN** button to scroll through the different Auto Change modes.
- Both Color Fade and Color Change modes running = “**A-JF**”

After you have chosen your desired running mode press the **SET UP** button until “**SP.XX**” is displayed. When this is displayed you can adjust the running speed of your desired program. Use the **UP** or **DOWN** button to adjust the speed between “**SP.01**” (slowest) and “**SP.16**” (fastest). Once you have set your desired running speed, press the **SET UP** button to return to your desired Auto Run Mode.

Static Color Select Mode: Choose between 64 static colors and activate/deactivate strobe.

1. Press **MODE** button to select the Static Color Select mode.
2. Press the **SET UP** button until “**CLXX**” or “**FSXX**” is displayed.
 - Static Color Mode = “**CLXX**”. There are 64 static colors to choose from. Use the **UP** or **DOWN** button to select desired static color.
 - Flash Speed Select = “**FS.XX**”. Use the **UP** or **DOWN** button to adjust between “**FS.00**” (flash off), and “**FS.01**” (slowest flash) to “**FS.15**” (fastest flash).

Other Program Select Mode: There are 4 “Other” setup features to adjust. LED Display On/Off, IR Remote On/Off, Display Inversion and Initialization.

Press the **MODE** button until “**doXX**”, “**rFXX**”, “**Stnd**” or “**dEFA**” is displayed.

- LED Display On/Off = “**doXX**”. Set the LED display to turn off after 60 seconds by pressing **UP** or **DOWN** button to display “**doff**”. The display will turn off after 60 seconds and will reappear with the press of a button. Be advised that it will turn off again automatically after 60 seconds of inactivity. Selecting “**don**” will set the LED display to On at all times.
- IR Remote Function On/OFF = “**rFXX**”. Press **UP** or **DOWN** button to display “**rFon**” to enable IR remote function or to “**rFoF**” to disable IR remote function.
- LED Display Inversion = “**Stnd**”. Press **UP** or **DOWN** button to invert to display 180 degrees.
- Initialization select mode = “**dEFR**”. Press the **UP** and **DOWN** buttons simultaneously to restore all modes to default settings. Press the **MODE** button to exit.

DMX TRAITS: CHANNEL FUNCTIONS & VALUES

DMX CHANNELS / VALUES / FUNCTIONS (11 DMX Channels)									
SUPPORTS SOFTWARE VERSION ≥ 1.0									
MODE / CHANNEL							VALUE	FUNCTION	
CH03	CH04	CH05	CH06	CH07	CH09	CH10			
1					8	8		COLOR MACROS	
							0	OFF	
							1-4	Color Macro 01	
							5-8	Color Macro 02	
							9-12	Color Macro 03	
							13-16	Color Macro 04	
							17-20	Color Macro 05	
							21-24	Color Macro 06	
							25-28	Color Macro 07	
							29-32	Color Macro 08	
							33-36	Color Macro 09	
							37-40	Color Macro 10	
							41-44	Color Macro 11	
							45-48	Color Macro 12	
							49-52	Color Macro 13	
							53-56	Color Macro 14	
							57-60	Color Macro 15	
							61-64	Color Macro 16	
							65-68	Color Macro 17	
							69-72	Color Macro 18	
							73-76	Color Macro 19	
							77-80	Color Macro 20	
							81-84	Color Macro 21	
							85-88	Color Macro 22	
							89-92	Color Macro 23	
							93-96	Color Macro 24	
							97-100	Color Macro 25	
							101-104	Color Macro 26	
							105-108	Color Macro 27	
							109-112	Color Macro 28	
							113-116	Color Macro 29	
							117-120	Color Macro 30	
							121-124	Color Macro 31	
							125-128	Color Macro 32	

DMX CHANNELS / VALUES / FUNCTIONS (11 DMX Channels)									
SUPPORTS SOFTWARE VERSION ≥ 1.0									
MODE / CHANNEL							VALUE	FUNCTION	
CH03	CH04	CH05	CH06	CH07	CH09	CH10			
1					8	8	129-132	Color Macro 33	
							133-136	Color Macro 34	
							137-140	Color Macro 35	
							141-144	Color Macro 36	
							145-148	Color Macro 37	
							149-152	Color Macro 38	
							153-156	Color Macro 39	
							157-160	Color Macro 40	
							161-164	Color Macro 41	
							165-168	Color Macro 42	
							169-172	Color Macro 43	
							173-176	Color Macro 44	
							177-180	Color Macro 45	
							181-184	Color Macro 46	
							185-188	Color Macro 47	
							189-192	Color Macro 48	
							193-196	Color Macro 49	
							197-200	Color Macro 50	
							201-204	Color Macro 51	
							205-208	Color Macro 52	
							209-212	Color Macro 53	
							213-216	Color Macro 54	
							217-220	Color Macro 55	
							221-224	Color Macro 56	
							225-228	Color Macro 57	
							229-232	Color Macro 58	
							233-236	Color Macro 59	
							237-240	Color Macro 60	
							241-244	Color Macro 61	
							245-248	Color Macro 62	
							249-252	Color Macro 63	
							253-255	Color Macro 64	

DMX CHANNELS / VALUES / FUNCTIONS (11 DMX Channels)									
SUPPORTS SOFTWARE VERSION \geq 1.0									
MODE / CHANNEL							VALUE	FUNCTION	
CH03	CH04	CH05	CH06	CH7	CH9	CH10			
	1	1	1	1	1	1		RED	
							0-255	0-100%	
	2	2	2	2	2	2		GREEN	
							0-255	0-100%	
	3	3	3	3	3	3		BLUE	
							0-255	0-100%	
	4	4	4	4	4	4		AMBER	
							0-255	0-100%	
2			5	5	5	5		SHUTTER / STROBE	
							0-31	LED OFF	
							32-63	LED ON	
							64-95	STROBING SLOW - FAST	
							96-127	LED ON	
							128-159	STROBE PULSE SLOW - FAST	
							160-191	LED ON	
							192-223	RANDOM STROBE SLOW - FAST	
							224-255	LED ON	
3		5	6	6	6	6		MASTER DIMMER	
							0-255	0-100%	
								MASTER DIMMER FINE 16-BIT	
							0-255	0-100%	
					7	7		PROGRAM SELECTION MODE	
							0-51	DIMMING MODE	
							52-102	COLOR MACRO MODE	
							103-153	COLOR CHANGE MODE	
							154-204	COLOR FADE MODE	
							205-255	SOUND ACTIVE MODE	

DMX CHANNELS / VALUES / FUNCTIONS (11 DMX Channels)									
SUPPORTS SOFTWARE VERSION ≥ 1.0									
MODE / CHANNEL							VALUE	FUNCTION	
CH03	CH04	CH05	CH06	CH07	CH09	CH10			
					8	8		COLOR CHANGE PROGRAMS	
							0-15	COLOR CHANGE 1	
							16-31	COLOR CHANGE 2	
							32-47	COLOR CHANGE 3	
							48-63	COLOR CHANGE 4	
							64-79	COLOR CHANGE 5	
							80-95	COLOR CHANGE 6	
							96-111	COLOR CHANGE 7	
							112-127	COLOR CHANGE 8	
							128-143	COLOR CHANGE 9	
							144-159	COLOR CHANGE 10	
							160-175	COLOR CHANGE 11	
							176-191	COLOR CHANGE 12	
							192-207	COLOR CHANGE 13	
							208-223	COLOR CHANGE 14	
							224-239	COLOR CHANGE 15	
							240-255	COLOR CHANGE 16	
					8	8		COLOR FADE PROGRAMS	
							0-15	COLOR FADE 1	
							16-31	COLOR FADE 2	
							32-47	COLOR FADE 3	
							48-63	COLOR FADE 4	
							64-79	COLOR FADE 5	
							80-95	COLOR FADE 6	
							96-111	COLOR FADE 7	
							112-127	COLOR FADE 8	
							128-143	COLOR FADE 9	
							144-159	COLOR FADE 10	
							160-175	COLOR FADE 11	
							176-191	COLOR FADE 12	
							192-207	COLOR FADE 13	
							208-223	COLOR FADE 14	
							224-239	COLOR FADE 15	
							240-255	COLOR FADE 16	

DMX CHANNELS / VALUES / FUNCTIONS (11 DMX Channels)										
SUPPORTS SOFTWARE VERSION ≥ 1.0										
MODE / CHANNEL							VALUE	FUNCTION		
CH03	CH04	CH05	CH06	CH7	CH9	CH10				
					8	8		SOUND MODE		
							0-15	SOUND ACTIVE MODE 1		
							16-31	SOUND ACTIVE MODE 2		
							32-47	SOUND ACTIVE MODE 3		
							48-63	SOUND ACTIVE MODE 4		
							64-79	SOUND ACTIVE MODE 5		
							80-95	SOUND ACTIVE MODE 6		
							96-111	SOUND ACTIVE MODE 7		
							112-127	SOUND ACTIVE MODE 8		
							128-143	SOUND ACTIVE MODE 9		
							144-159	SOUND ACTIVE MODE 10		
							160-175	SOUND ACTIVE MODE 11		
							176-191	SOUND ACTIVE MODE 12		
							192-207	SOUND ACTIVE MODE 13		
							208-223	SOUND ACTIVE MODE 14		
							224-239	SOUND ACTIVE MODE 15		
							240-255	SOUND ACTIVE MODE 16		
					9	9		SPEED / SENSITIVITY		
							0-31	SLOW - FAST		
							32-255	LEAST SENSITIVE - MOST SENSITIVE		
				7		10		DIMMER CURVES		
							0-20	STANDARD		
							21-40	STAGE		
							41-60	TV		
							61-80	ARCHITECTURAL		
							81-100	THEATRE		
							101-255	DEFAULT TO UNIT SETTING		

When Channel 7 is between the values of 0-51, Channels 1-4 are used, and Channel 5 will control strobing.

When Channel 7 is between the values of 52-102, Channel 8 is in Color Macros Mode, and Channel 5 will control strobing.

When Channel 7 is between the values of 103-153, Channel 8 is in Color Change Mode, and Channel 9 will control the color change speed.

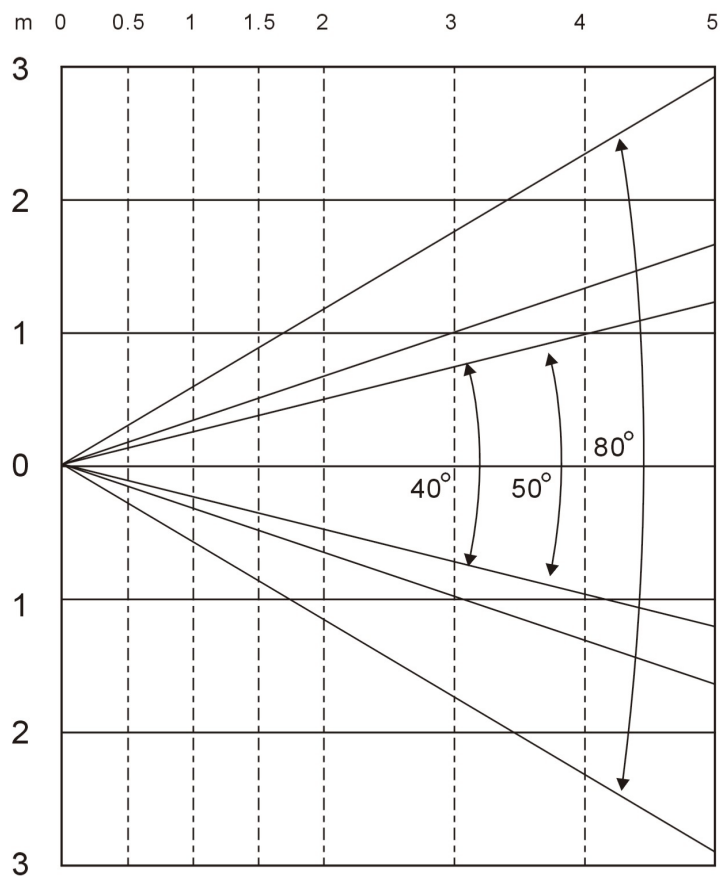
When Channel 7 is between the values of 154-204, Channel 8 is in Color Fade Mode, and Channel 9 will control the color fade speed.

When Channel 7 is between the values of 205-255, Channel 8 is in Sound Active Mode, and Channel 9 will control the sound sensitivity.

COLOR MACRO CHART

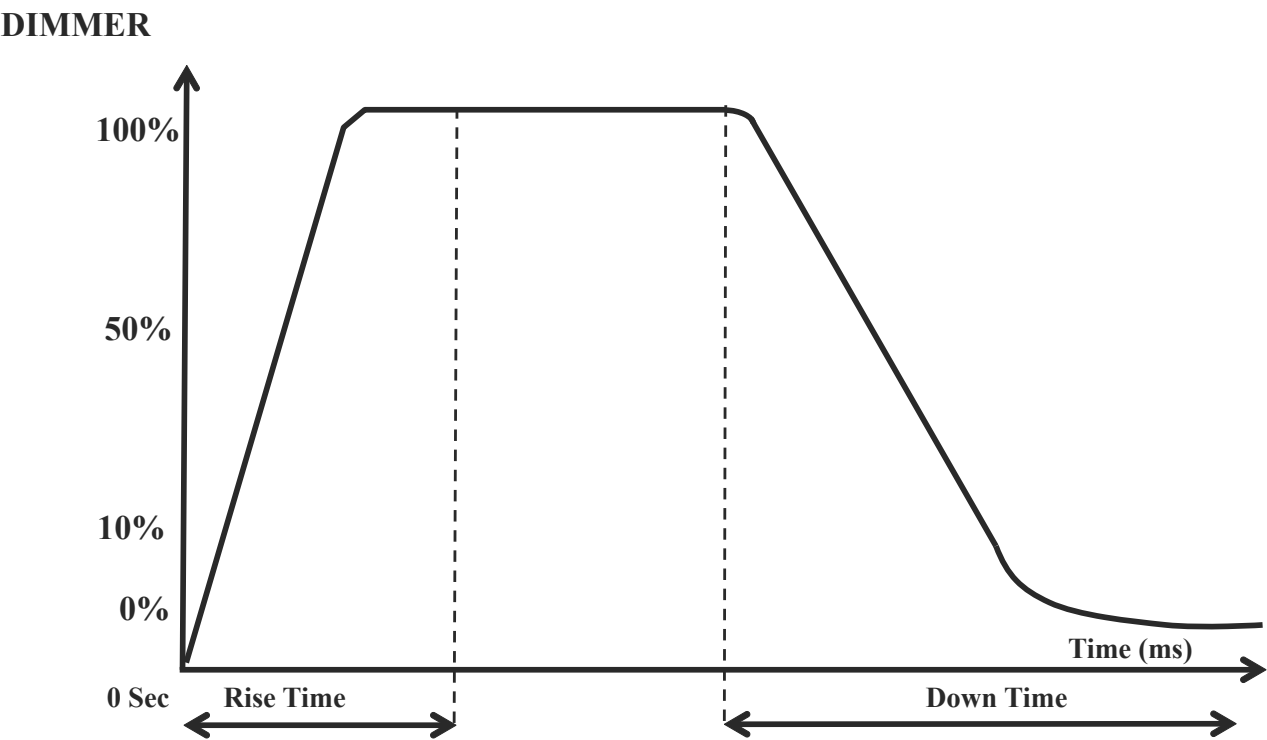
Color No.	DMX Value	RGBA Color Intensity				Color No.	DMX Value	RGBA Color Intensity			
		Red	Green	Blue	Amber			Red	Green	Blue	Amber
Color1 (off)	0	0	0	0	0	Color34	129-132	255	206	143	0
Color2	1-4	80	255	234	80	Color35	133-136	254	177	153	0
Color3	5-8	80	255	164	80	Color36	137-140	254	192	138	0
Color4	9-12	77	255	112	77	Color37	141-144	254	165	98	0
Color5	13-16	117	255	83	83	Color38	145-148	254	121	0	0
Color6	17-20	160	255	77	77	Color39	149-152	176	17	0	0
Color7	21-24	223	255	83	83	Color40	153-156	96	0	11	0
Color8	25-28	255	243	77	77	Color41	157-160	234	139	171	0
Color9	29-32	255	200	74	74	Color42	161-164	224	5	97	0
Color10	33-36	255	166	77	77	Color43	165-168	175	77	173	0
Color11	37-40	255	125	74	74	Color44	169-172	119	130	199	0
Color12	41-44	255	97	77	74	Color45	173-176	147	164	212	0
Color13	45-48	255	71	77	71	Color46	177-180	88	2	163	0
Color14	49-52	255	83	134	83	Color47	181-184	0	38	86	0
Color15	53-56	255	93	182	93	Color48	185-188	0	142	208	0
Color16	57-60	255	96	236	96	Color49	189-192	52	148	209	0
Color17	61-64	238	93	255	93	Color50	193-196	1	134	201	0
Color18	65-68	196	87	255	87	Color51	197-200	0	145	212	0
Color19	69-72	150	90	255	90	Color52	201-204	0	121	192	0
Color20	73-76	100	77	255	77	Color53	205-208	0	129	184	0
Color21	77-80	77	100	255	77	Color54	209-212	0	83	115	0
Color22	81-84	67	148	255	67	Color55	213-216	0	97	166	0
Color23	85-88	77	195	255	77	Color56	217-220	1	100	167	0
Color24	89-92	77	234	255	77	Color57	221-224	0	40	86	0
Color25	93-96	158	255	144	144	Color58	225-228	209	219	182	0
Color26	97-100	255	251	153	153	Color59	229-232	42	165	85	0
Color27	101-104	255	175	147	147	Color60	233-236	0	46	35	0
Color28	105-108	255	138	186	138	Color61	237-240	8	107	222	0
Color29	109-112	255	147	251	147	Color62	241-244	107	156	231	0
Color30	113-116	151	138	255	138	Color63	245-248	165	198	247	0
Color31	117-120	151	138	255	138	Color64	249-252	0	0	189	0
Color32	121-124	138	169	255	138	Color65	253-255	255	255	255	0
Color33	125-128	255	255	255	255						

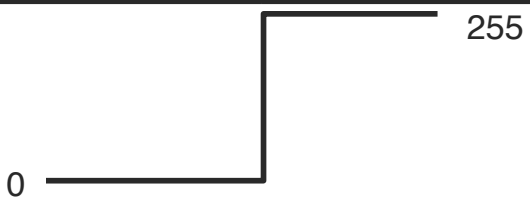
PHOTOMETRIC CHART



	0.5m	1m	2m	3m	4m	5m	
40°	0.4375	0.875	1.75	2.625	3.50	4.375	Diameter (Meters)
R	10650	2530	611	289	168	111	LUX
G	8490	1869	511	226	130	91	LUX
B	8540	1950	545	242	135	95	LUX
A	3110	997	253	113.8	61.1	39.1	LUX
RGBA	25900	7320	1970	810	474	297	LUX
50°	0.53	1.06	2.12	3.18	4.24	5.30	Diameter (Meters)
R	5780	1475	393	170.8	98.5	65.4	LUX
G	4760	1360	335	154.4	90.5	58.8	LUX
B	4800	1454	372	172.8	96.4	64.9	LUX
A	2480	892	191	85.4	48.8	31.4	LUX
RGBA	24300	5240	1472	681	373	240	LUX
80°	1.01	2.02	4.04	6.06	8.08	10.1	Diameter (Meters)
R	3900	975	247	112.5	66.3	44.7	LUX
G	3650	853	219	103.8	60.5	39.1	LUX
B	3660	926	246	110.4	65.9	42.5	LUX
A	2350	689	159.3	67.9	37.2	25.1	LUX
RGBA	12630	3590	996	549	238	159.9	LUX

DIMMER CURVE CHART



Dimming Curve Ramp Effect	0 sec Fade Time		1 sec Fade Time	
		255		255
	Rise Time (ms)	Down Time (ms)	Rise Time (ms)	Down Time (ms)
Standard (default)	0	0	0	0
Stage	780	1100	1540	1660
TV	1180	1520	1860	1940
Architectural	1380	1730	2040	2120
Theatre	1580	1940	2230	2280

REMOTE OPERATING INSTRUCTIONS

The **ADJ RFC** remote (sold separately) has many different functions and allows you to control your COB Cannon Wash from long distance. The **ADJ RFC** remote can control your system up to 150ft. To use the RFC you must first activate the fixtures receiver.

BLACKOUT - Pressing this button will blackout the fixture. Press this button for more then 3 seconds to activate default mode. All modes will return to their default settings.

AUTO RUN - This button lets you cycle through color fade mode, color change mode, and auto run mode. Each press of the button will change to the next mode. Color fade mode and color change mode have 16 different programs. You can use the “+” and “-” buttons to cycle through the 16 programs. You can control the speeds of each mode by pressing the SPEED button and then using the “+” and “-” buttons to adjust the speed.

SELECTION PROGRAM - Press this button to activate Static Color mode. Use the “+” and “-” buttons to scroll through the 64 colors. Once you have found your desired color press the FLASH button to activate strobing. Use the “+” and “-” buttons adjust the strobe speed.

FLASH - This button will activate the flash (strobe) effect. You can control the flash speed by pressing the “+” and “-” buttons.

SPEED - Press this button and use the “+” and “-” buttons to adjust the speed of the color fade mode, color change mode, and auto run.

SOUND ACTIVE - This button activates sound active mode. Use the “+” and “-” buttons to scroll through the 16 sound active modes and find your desired mode. Press the SOUND ACTIVE button again to access sound sensitivity adjustment. Use the “+” and “-” buttons to adjust the sound sensitivity level.

R G B W/A - Press either one of these buttons and then press the “+” and “-” to adjust the brightness. Press the Flash button to activate strobing and use the “+” or “-” buttons to adjust the strobe speed.

“+” and “-” - These buttons are used to adjust the flash rate, auto run speed, color fade speed, color change speed, sound sensitivity, and output intensity. These buttons are also used to scroll through the static colors, color fade programs, color change programs, and sound active programs.

MULTIPLE UNIT POWER LINKING

With this feature you can connect the fixtures to one another using the power cable input and output sockets.

NOTE: USE CAUTION WHEN POWER LINKING OTHER FIXTURES AS THE POWER CONSUMPTION OF OTHER MODEL FIXTURES MAY EXCEED THE MAX POWER OUTPUT ON THIS FIXTURE! CHECK SIL SCREEN FOR MAX AMPS.

PRIMARY SECONDARY SETUP

1. Daisy chain your units via the XLR connector on the rear of the unit. Use standard XLR data cables to link your units. Remember that the Male XLR connector is the input and the Female XLR connector is the output. The first unit in the chain (primary) will use the female XLR connector only. The last unit in the chain will use the male XLR connector only.
2. Set the “Primary” unit to your desired mode of operation.
3. On the “Secondary” units press the **MODE** button until “**SECd**” is displayed. Each “Secondary” unit must be set to the same setting.
4. Connect the first “Secondary” unit to the “Primary.” The “Secondary” unit(s) should now start following the “Primary” unit.

OPTIONAL LENS CHANGE

The COB Cannon Wash comes with an 80-degree lens already attached. Included in the box are optional 40 & 50-degree lenses. To switch lenses simply remove the retainer ring located in front of the current lens. After the retainer ring has been removed carefully remove the lens, and attach your desired lens. Reinstall the retainer ring and the switch is complete. When reinstalling the retainer ring, make sure to insert 3 points of the retainer ring into the 3 notches located around the inside of the lens frame.

FUSE REPLACEMENT

Disconnect the unit from its power source. Remove the power cord from the unit. Once the cord has been removed, the fuse holder is located under the powerCON connection. Use a Phillips head screwdriver to remove the fuse holder. Remove the fuse located inside the fuse holder and replace with the new fuse. Install the fuse holder and new fuse and secure it.

CLEANING

Due to fog residue, smoke, and dust cleaning the internal and external optical lenses must be carried out periodically to optimize light output.

1. Use normal glass cleaner and a soft cloth to wipe down the outside casing.
2. Clean the external optics with glass cleaner and a soft cloth every 20 days.
3. Always be sure to dry all parts completely before plugging the unit back in.

Cleaning frequency depends on the environment in which the fixture operates (i.e. smoke, fog residue, dust, dew).

TROUBLE SHOOTING TIPS

Unit does not turn on:

1. Confirm the unit has AC power.
2. Check if circuit breaker that controls the AC outlet the light is plugged into is not tripped.
3. Confirm the AC power cord from the light is not damaged or cut.
4. Check the fuse and see if it needs to be replaced.
5. If none of these solutions work, please contact ADJ Customer Service.

Unit does not respond to DMX:

1. Check that the DMX cables are connected properly and are wired correctly (pin 3 is “hot”; on some other DMX devices pin 2 may be ‘hot’). Also, check that all cables are connected to the right connectors; it does matter which way the inputs and outputs are connected.

Unit does not respond to sound:

1. Quiet or high-pitched sounds will not activate the unit.
2. Make sure that Sound Active mode is activated.

FREQUENTLY ASKED QUESTIONS

Listed below are a few answers to common questions users may have.

1. Can you use barn doors with the COB Cannon Wash?

Yes, barn doors (BAR001) are an optional accessory and can be purchased separately.

2. What is the light output in lux?

996 LUX @ 2M; 238 LUX @4M (80-degree), 1472 LUX @2M; 373 LUX @4M (50-degree), 1970 LUX @2M; 474 LUX @4M (40-degree).

3. Is the COB Cannon Wash flicker free?

Yes, the COB Cannon Wash features Flicker Free operation. At 1,000Hz, there should be no flickering on camera.

4. How many fixtures can be daisy chained together?

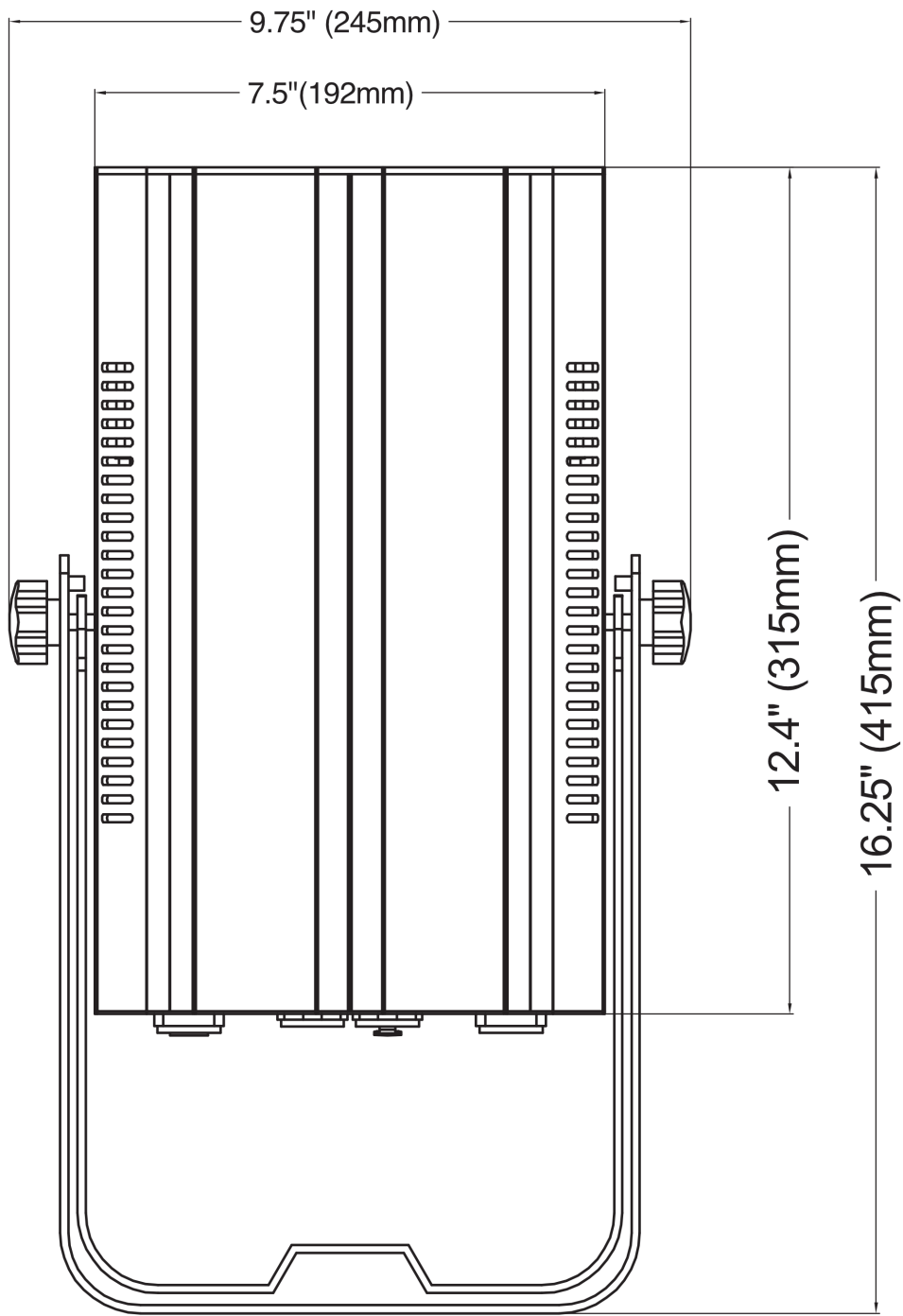
Up to 5 COB Cannon Wash units can be daisy chained together. (After 5 fixtures you will need to use a new power outlet. They must be the same fixtures. DO NOT mix fixtures!) Use caution when power linking other model fixtures as the power consumption of other model fixtures may exceed the max power output on this fixture. Check Silk Screen for Max Amps.

SPECIFICATIONS

- COB Technology (Chip On Board) with one Quad (4-IN-1) RGBA COB LED
- Produces powerful, smooth RGBA color mixing with rich palettes of color
- Use as Wash/par or Pixel Mapped for a stunning visual effect
- 64 built-in color macros
- Flicker Free operation (No flickering on camera)
- Refresh Rate:1KHz
- Built-in Color Macros
- 7 DMX Channel modes (3,4,5,6,7,9,10 Ch.)
- LED pulse and strobe effect
- Electronic Dimming: 0 - 100%
- 5 selectable Dim Curves (Standard, Stage, TV, Architectural & Theatre)
- 80-degree beam angle
- Includes lens kit to change to 40-degrees or 50-degrees beam angle
- 3-pin XLR chassis mount connectors for DMX linking
- With Wired Digital Communication Network
- Locking power In & Out to daisy chain power (up to 5 fixtures)
- 4-button digital DMX display on rear panel
- Compatible with the ADJ RFC wireless remote control (sold separately)
- Dual yoke allows fixture to be mounted on truss or set on the ground
- Light Source: 1x 150-Watt COB Quad LED (RGBA: 4-IN-1, rated at approximately 50,000 hrs)
- Light Output: 1970 LUX @2M; 474 LUX @4M (40-degree beam), 1472 LUX @2M; 373 LUX @ 4M (50-degree beam), 996 LUX @2M; 238 LUX @4M (80-degree beam)
- Auto sensing power supply: AC 100V/60Hz - 240V/50Hz
- Dimensions (LxWxH): 16.25"x9.75"x7.5" / 415x245x192mm
- Weight: 9 lbs. / 4.1 kg.
- cETLus Approved (#4002034)



DIMENSIONS



OPTIONAL ACCESSORIES

Order Code	Description
AC5PDMX3	3' DMX cable with 5-pin male to 5-pin female connection.*
AC5PDMX3PRO	Pro Series 3' DMX cable with 5-pin male to 5-pin female connection.*
S-Cable/60	Safety Cable with 60-pound weight rating
O-CLAMP	360 degree clamp that wraps around truss tubing.
PRO-CLAMP	360 degree aluminum clamp with a max rating of 1100 lbs.

FCC STATEMENT

This device complies with Part 15 of the FCC Rules. Operation is subject to the following two conditions: (1) this device may not cause harmful interference, and (2) this device must accept any interference received, including interference that may cause undesired operation.

FCC RADIO FREQUENCY INTERFERENCE WARNINGS & INSTRUCTIONS

This product has been tested and found to comply with the limits as per Part 15 of the FCC Rules. These limits are designed to provide reasonable protection against harmful interference in a residential installation. This device uses and can radiate radio frequency energy and, if not installed and used in accordance with the included instructions, may cause harmful interference to radio communications. However, there is no guarantee that interference will not occur in a particular installation. If this device does cause harmful interference to radio or television reception, which can be determined by turning the device off and on, the user is encouraged to try to correct the interference by one or more of the following methods:

- Reorient or relocate the device.
- Increase the separation between the device and the receiver.
- Connect the device to an electrical outlet on a circuit different from which the radio receiver is connected.
- Consult the dealer or an experienced radio/TV technician for help.

Europe Energy Saving Notice

Energy Saving Matters (EuP 2009/125/EC)

Saving electric energy is a key to help protecting the environment. Please turn off all electrical products when they are not in use. To avoid power consumption in idle mode, disconnect all electrical equipment from power when not in use. Thank you



