



VIZI Q WASH7



User Instructions

Intertek
4010765

©2020 ADJ Products, LLC all rights reserved. Information, specifications, diagrams, images, and instructions herein are subject to change without notice. ADJ Products, LLC logo and identifying product names and numbers herein are trademarks of ADJ Products, LLC. Copyright protection claimed includes all forms and matters of copyrightable materials and information now allowed by statutory or judicial law or hereinafter granted. Product names used in this document may be trademarks or registered trademarks of their respective companies and are hereby acknowledged. All non-ADJ Products, LLC brands and product names are trademarks or registered trademarks of their respective companies.

ADJ Products, LLC and all affiliated companies hereby disclaim any and all liabilities for property, equipment, building, and electrical damages, injuries to any persons, and direct or indirect economic loss associated with the use or reliance of any information contained within this document, and/or as a result of the improper, unsafe, insufficient and negligent assembly, installation, rigging, and operation of this product.

Europe Energy Saving Notice

Energy Saving Matters (EuP 2009/125/EC)

Saving electric energy is a key to help protecting the environment. Please turn off all electrical products when they are not in use. To avoid power consumption in idle mode, disconnect all electrical equipment from power when not in use. Thank you!

Table of Contents

Unpacking	4
Introduction	4
Customer Support	4
General Instructions	5
Features	5
Warranty Registration	5
Handling Precautions	5
Safety Precautions	6
Dimensions	7
Mounting	8
DMX Set Up	10
DMX Control	13
DMX Traits	14
Color Macro Chart	20
System Menu	21
Operation	33
WiFly Set Up	34
WiFly Primary-Secondary Set Up	34
Photometric Chart	35
Dimmer Curve Chart	37
Power Cord Daisy Chain	37
Fuse Replacement	38
Cleaning	38
Troubleshooting	38
Warranty	39
Specifications	40

Unpacking: Thank you for purchasing the Vizi Q Wash7 by ADJ Products, LLC. Every Vizi Q Wash7 has been thoroughly tested and has been shipped in perfect operating condition. Carefully check the shipping carton for damage that may have occurred during shipping. If the carton appears to be damaged, carefully inspect your fixture for any damage and be sure all equipment necessary to operate the unit has arrived intact. In the event damage has been found or parts are missing, please contact our toll free customer support number for further instructions. Please do not return this unit to your dealer without contacting customer support first.

Introduction: The Vizi Q Wash7 is a DMX intelligent, moving head, wash fixture. The Vizi Q Wash7 has 3 DMX channel modes; 17 channels, 19 channels, or 23 channels. The fixture has two different operating modes; auto program or DMX control. The Vizi Q Wash7 can be used as a stand alone unit or in a primary/secondary configuration. For best results use fog or special effects smoke to enhance the beams projections.

Customer Support: Contact ADJ Service for any product related service and support needs. Also visit forums.adj.com with questions, comments or suggestions.

Parts: To purchase parts online visit <http://parts.americandj.com>

ADJ SERVICE USA - Monday - Friday 8:00am to 4:30pm PST
Voice: 800-322-6337 | Fax: 323-832-2941 | support@adj.com

ADJ SERVICE EUROPE - Monday - Friday 08:30 to 17:00 CET
Voice: +31 45 546 85 60 | Fax: +31 45 546 85 96 | support@adj.eu

ADJ PRODUCTS LLC USA
6122 S. Eastern Ave. Los Angeles, CA. 90040 323-582-2650 | Fax
323-532-2941 | www.adj.com | info@adj.com

ADJ SUPPLY Europe B.V.
Junostraat 2 6468 EW Kerkrade, The Netherlands
+31 (0)45 546 85 00 | Fax +31 45 546 85 99
www.adj.eu | info@americandj.eu

ADJ PRODUCTS GROUP Mexico
AV Santa Ana 30 Parque Industrial Lerma, Lerma, Mexico 52000
+52 (728) 282-7070

Warning! To prevent or reduce the risk of electrical shock or fire, do not expose this unit to rain or moisture.

Caution! There are no user serviceable parts inside this unit. Do not attempt any repairs yourself, doing so will void your manufactures warranty. In the unlikely event your unit may require service please contact ADJ Products, LLC.

PLEASE recycle the shipping carton when ever possible.

Vizi Q Wash7

General Instructions

To optimize the performance of this product, please read these operating instructions carefully to familiarize yourself with the basic operations of this unit. These instructions contain important safety information regarding the use and maintenance of this unit. Please keep this manual with the unit, for future reference.

Vizi Q Wash7

Features

- DMX-512 Protocol Compatible (3 DMX Modes: 17 DMX Channel Mode, 19 DMX Channel Mode, and 23 DMX Channel Mode)
- Pan & Tilt Invert
- Locking Power Connector In/Out
- Locking 3/5-P XLR Connector In/Out
- Color Macros + Individual RGBW Control
- 2 Operating Modes - Auto Program & DMX Control
- Built-In ADJ's WiFly EXR Wireless DMX Up to 2,500 feet/760M
- Stand Alone Setup or Primary-Secondary Configuration
- Edit and Save Scenes into the Memory

Vizi Q Wash7

Warranty Registration

The Vizi Q Wash7 carries a two year limited warranty. Please fill out the enclosed warranty card to validate your purchase. All returned service items whether under warranty or not, must be freight pre-paid and accompany a return authorization (R.A.) number. The R.A. number must be clearly written on the outside of the return package. A brief description of the problem as well as the R.A. number must also be written down on a piece of paper and included in the shipping carton. If the unit is under warranty, you must provide a copy of your proof of purchase invoice. You may obtain a R.A. number by contacting our customer support team on our toll free customer support number. All packages returned to the service department not displaying a R.A. number on the outside of the package will be returned to the shipper at the shippers cost.

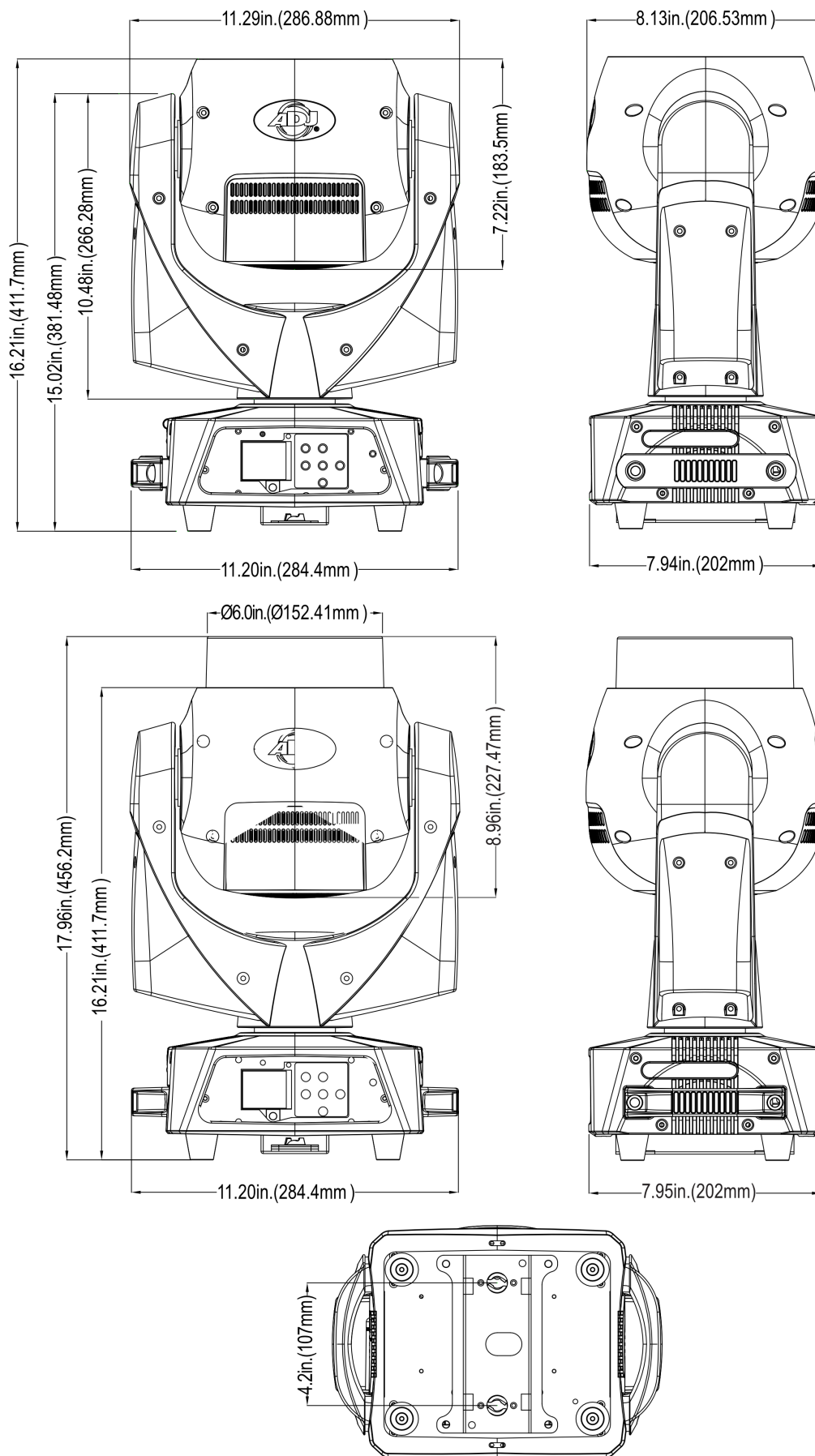
Vizi Q Wash7

Handling Precautions

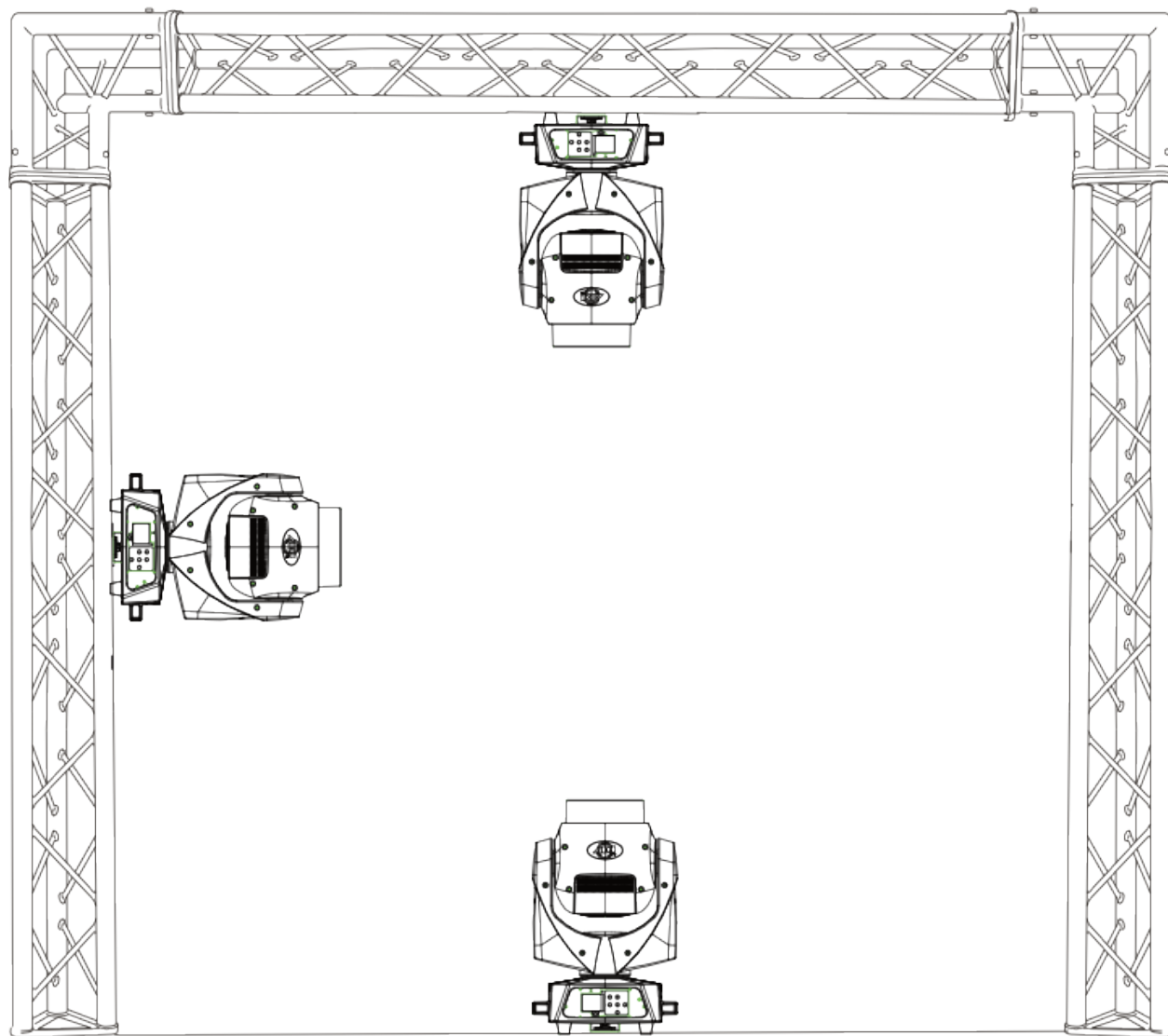
Caution! There are no user serviceable parts inside this unit. Do not attempt any repairs yourself, doing so will void your manufacturer's warranty. In the unlikely event your unit may require service please contact ADJ Products, LLC. During operation the housing may become extremely hot. Avoid touching the unit with bare hands while in use. ADJ Products, LLC will not accept any liability for any resulting damages caused by the non-observance of this manual or any unauthorized modification to this unit.

For Your Own Personal Safety, Please Read and Understand This Manual Completely Before You Attempt To Install Or Operate This Unit!

- To reduce the risk of electrical shock or fire, do not expose this unit to rain or moisture.
- Do not spill water or other liquids into or on to your unit.
- Be sure that the local power outlet matches that of the required voltage for your unit.
- Do not attempt to operate this unit if the power cord has been frayed or broken.
- Do not attempt to remove or break off the ground prong from the electrical cord. This prong is used to reduce the risk of electrical shock and fire in case of an internal short.
- Disconnect from main power before making any type of connection.
- Do not remove the cover under any conditions. There are no user-serviceable parts inside.
- Never operate this unit when its cover is removed.
- Always be sure to mount this unit in an area that will allow proper ventilation. Allow about 6" (15cm) between this device and a wall.
- Do not attempt to operate this unit, if it becomes damaged.
- This unit is intended for indoor use only; use of this product outdoors voids all warranties.
- Always mount this unit in a safe and stable manner.
- Power-supply cords should be routed so that they are not likely to be walked on or pinched by items placed upon or against them, paying particular attention to cords at plugs, convenience receptacles, and the point where they exit from the appliance.
- Cleaning - The fixture should be cleaned only as recommended by the manufacturer. See page 45 for cleaning details.
- Heat - This fixture should be situated away from heat sources such as radiators, heat registers, stoves, or other appliances (including amplifiers) that produce heat.
- The fixture should be serviced by qualified service personnel when:
 - A. Objects have fallen, or liquid has been spilled into the appliance.
 - B. The appliance has been exposed to rain or water.
 - C. The appliance does not appear to operate normally or exhibits a marked change in performance.

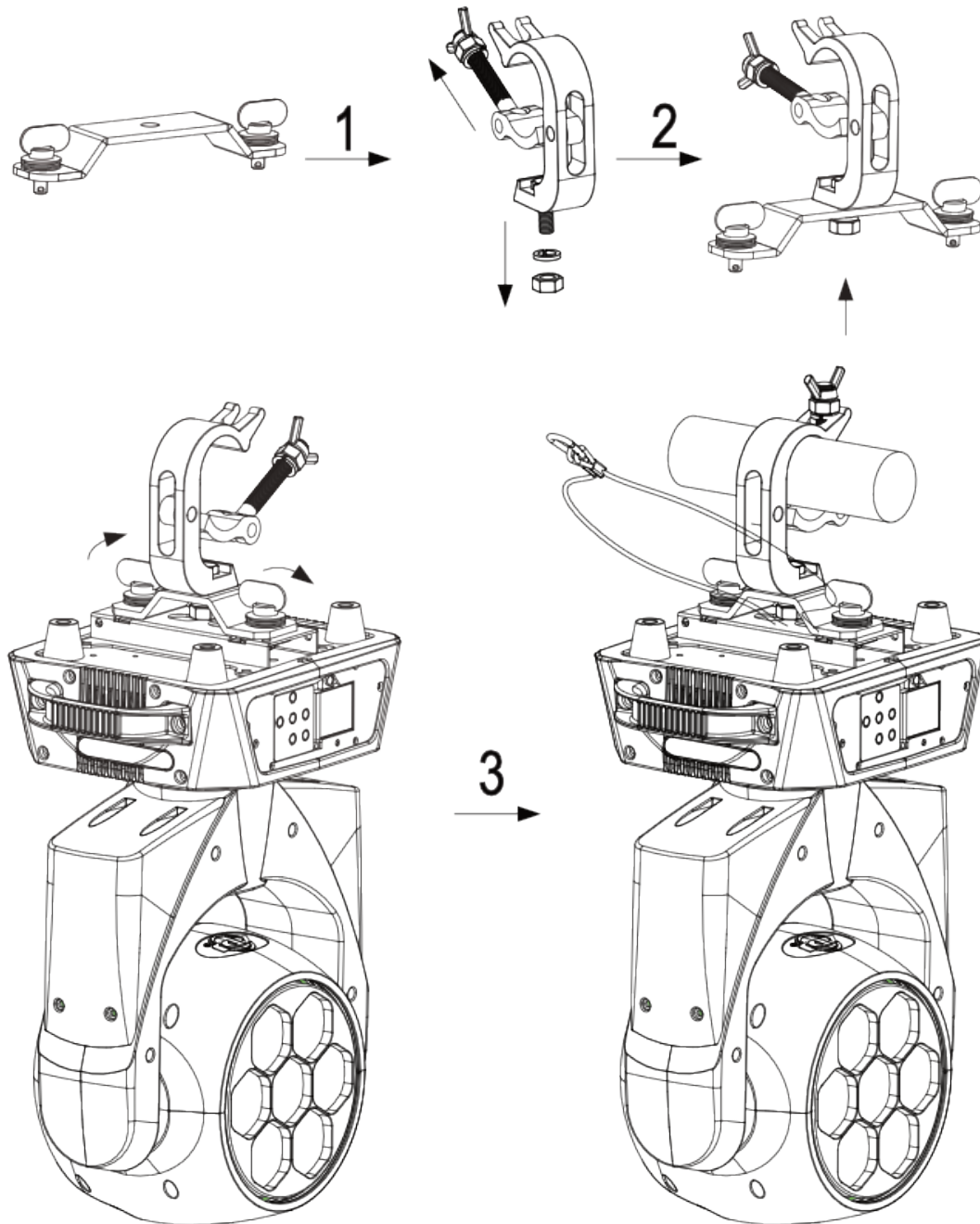


When installing the unit, the trussing or area of installation must be able to hold 10 times the weight without any deformation. When installing, the unit must be secured with a secondary safety attachment, e.g. and appropriate safety cable. Never stand directly below the unit when mounting, removing, or servicing the unit. Overhead mounting requires extensive experience, including calculating working load limits, installation material being used, and periodic safety inspection of all installation material and unit. If you lack these qualifications, do not attempt the installation yourself. These installations should be inspected by at least once per year by a qualified technician.



The Vizi Q Wash7 is fully operational in three different mounting positions; hanging upside-down from a ceiling, mounted sideways on trussing, or set on a flat level surface. Be sure this fixture is kept at least 0.5m away from any flammable materials (decoration etc.). Always use and install the supplied safety cable as a safety measure to prevent accidental damage and/or injury in the event the clamp fails (see next page). Never use the carrying handles for secondary attachment.

NOTICE: The suitable environmental temperature for this lighting fixture is between -25° C to 45° C. Do not place this lighting fixture in an environment where the temperatures are under or above the stated temperatures. This will allow the fixture to run at its best, and help prolong the fixture life.



Screw one clamp each via a M12 screw and nut onto the Omega holders. Insert the quick-lock fasteners of the Omega holders into the respective holes on the bottom of the Vizi Q Wash7. Tighten the quick-lock fasteners fully clockwise. Install the second Omega holder. Pull the safety-cable through the holes on the bottom of the base and over the trussing system or a safe fixation spot. Insert the end in the carbiner, and tighten the safety screw.

Power Supply: The ADJ Vizi Q Wash7 contains a electronic voltageswitch, which will auto sense the voltage when it is plugged into the power source. With the electronic ballast you do not need to worry about wall voltage, this unit can be plugged in anywhere.

DMX-512: DMX is short for Digital Multiplex. This is a universal protocol used by most lighting and controller manufactures as a form of communication between intelligent fixtures and controllers. A DMX controller sends DMX data instructions from the controller to the fixture. DMX data is sent as serial data that travels from fixture to fixture via the DATA “IN” and DATA “OUT” XLR terminals located on all DMX fixtures (most controllers only have a DATA “OUT” terminal).

DMX Linking: DMX is a language allowing all makes and models of different manufactures to be linked together and operate from a single controller, as long as all fixtures and the controller are DMX compliant. To ensure proper DMX data transmission, when using several DMX fixtures try to use the shortest cable path possible. The order in which fixtures are connected in a DMX line does not influence the DMX addressing. For example; a fixture assigned a DMX address of 1 may be placed anywhere in a DMX line, at the beginning, at the end, or anywhere in the middle. When a fixture is assigned a DMX address of 1, the DMX controller knows to send DATA assigned to address 1 to that unit, no matter where it is located in the DMX chain.

Data Cable (DMX Cable) Requirements: The Vizi Q Wash7 can be controlled via DMX-512 protocol. The Vizi Q Wash7 has 2 DMX channel modes, a 2 channel mode and 9 channel mode. The DMX address is set electronically using the controls on the back panel of the unit. Your unit and your DMX controller require a approved DMX-512 110 Ohm Data cable for data input and data output. We recommend Accu-Cable DMX cables. If you are making your own cables, be sure to use standard 110-120 Ohm shielded cable (This cable may be purchased at almost all professional sound and lighting stores). Your cables should be made with a male and female XLR connector on either end of the cable. Also remember that DMX cable must be daisy chained and cannot be split.



Notice: Be sure to follow figures two and three when making your own cables. Do not use the ground lug on the XLR connector. Do not connect the cable's shield conductor to the ground lug or allow the shield conductor to come in contact with the XLR's outer casing. Grounding the shield could cause a short circuit and erratic behavior.



Figure 2

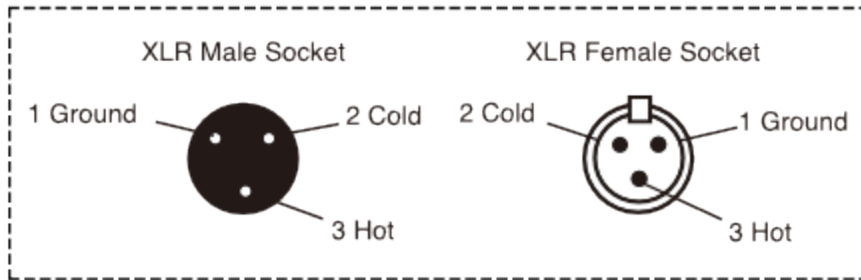
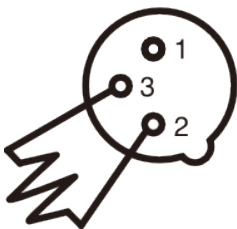


Figure 3

XLR Pin Configuration	
Pin 1 =	Ground
Pin 2 =	Data Compliment (negative)
Pin 3 =	Data True (positive)

Special Note: Line Termination. When longer runs of cable are used, you may need to use a terminator on the last unit to avoid erratic behavior. A terminator is a 110-120 ohm 1/4 watt resistor which is connected between pins 2 and 3 of a male XLR connector (DATA+ and DATA-). This unit is inserted in the female XLR connector of the last unit in your daisy chain to terminate the line. Using a cable terminator (ADJ part number Z-DMX/T) will decrease the possibilities of erratic behavior.



Termination reduces signal errors and avoids signal transmission problems and interference. It is always advisable to connect a DMX terminal, (Resistance 120 Ohm 1/4 W) between PIN 2 (DMX-) and PIN 3 (DMX +) of the last fixture.

Figure 4

5-Pin XLR DMX Connectors. Some manufactures use 5-pin XLR connectors for DATA transmission in place of 3-pin. 5-pin XLR fixtures may be implemented in a 3-pin XLR DMX line. When inserting standard 5-pin XLR connectors in to a 3-pin line a cable adapter must be used, these adapters are readily available at most electric stores. The chart below details a proper cable conversion.

3-Pin XLR to 5-Pin XLR Conversion		
Conductor	3-Pin XLR Female (Out)	5-Pin XLR Male (In)
Ground/Shield	Pin 1	Pin 1
Data Compliment (- signal)	Pin 2	Pin 2
Data True (+ signal)	Pin 3	Pin 3
Not Used		Pin 4 - Do Not Use
Not Used		Pin 5 - Do Not Use

Universal DMX Control: This function allows you to use a universal DMX-512 controller to control head movement, colors, masterdimmer, shutter (strobe), and various other features. A DMX controller allows you to create unique programs tailored to your individual needs.

1. The Vizi Q Wash7 has 3 DMX channel modes; 17 Channel mode, 19 Channel mode, and 23 Channel mode. See pages 13-21 for detailed description of the DMX traits.
2. To control your fixture in DMX mode, follow the set-up procedures on pages 9-11 as well as the set-up specifications that are included with your DMX controller.
3. Use the controller's faders to control the various DMX fixture traits.
4. This will allow you to create your own programs.
5. Follow the directions on page 24 to select your DMX Channel mode, and to set the DMX address.
6. For longer cable runs (more than a 100 feet) use a terminator on the last fixture.
7. For help operating in DMX mode consult the manual included with your DMX controller.

Channel	Value	Function
1	0 - 255	PAN MOVEMENT 8bit (540° or 630°)
2	0 - 255	TILT MOVEMENT 8BIT
3	0 - 255	ALL RED LED: 0% - 100%
4	0 - 255	ALL GREEN LED: 0% - 100%
5	0 - 255	ALL BLUE LED: 0 % - 100%
6	0 - 255	ALL WHITE LED: 0% - 100%
7	0 - 255	COLOR MACROS
8	0 - 31	SHUTTER/STROBE LED OFF
	32 - 63	LED ON
	64 - 95	STROBING SLOW - FAST
	96 - 127	LED ON
	128 - 159	STROBE PULSE SLOW - FAST
	160 - 191	LED ON
	192 - 223	RANDOM STROBE SLOW - FAST
	224 - 255	LED ON
9	0 - 255	MASTER DIMMER: 0% - 100%
10	0 - 255	DIMMER FINE: 0% - 100%
11	0 - 255	ZOOM: 7° - 58°
12	0	AUTO PROGRAMS OFF
	1 - 20	PROGRAM 1
	21 - 40	PROGRAM 2
	41 - 60	PROGRAM 3
	61 - 80	PROGRAM 4
	81 - 100	PROGRAM 5
	101 - 120	PROGRAM 6
	121 - 140	PROGRAM 7
	141 - 160	PROGRAM 8
	161 - 180	PROGRAM 9
	181 - 200	PROGRAM 10
	201 - 220	PROGRAM 11
	221 - 240	PROGRAM 12
	241 - 250	PROGRAM 13
	251 - 255	PROGRAM 14
13	0 - 255	PROGRAM SPEED SLOW - FAST
14	0	AUTO PROGRAM FADE NORMAL
	1 - 255	SLOW - FAST

Channel	Value	Function
15	0 - 20	DIMMER MODE
	21 - 40	STANDARD
	41 - 60	STAGE
	61 - 80	TV
	81 - 100	ARCHITECTURAL
	101 - 255	THEATRE DEFAULT DIMMER SETTING
16	0 - 225	PAN/TILT SPEED
	226 - 235	FAST - SLOW
	236 - 255	BLACKOUT BY MOVEMENT
		NO FUNCTION
17	0 - 79	AUTO PROGRAMS
	80 - 84	NORMAL
	85 - 99	ALL MOTOR RESET
	100 - 119	NO FUNCTION
	120 - 139	INTERNAL PROGRAM 1
	140 - 159	INTERNAL PROGRAM 2
	160 - 179	INTERNAL PROGRAM 3
	180 - 199	INTERNAL PROGRAM 4
	200 - 219	INTERNAL PROGRAM 5
	220 - 239	INTERNAL PROGRAM 6
	240 - 255	INTERNAL PROGRAM 7
		NO FUNCTION

Channel	Value	Function
1	0 - 255	PAN MOVEMENT 8bit (540° or 630°)
2	0 - 255	PAN MOVEMENT FINE 16bit
3	0 - 255	TILT MOVEMENT 8bit
4	0 - 255	TILT MOVEMENT FINE 16bit
5	0 - 255	ALL RED LED: 0% - 100%
6	0 - 255	ALL GREEN LED: 0% - 100%
7	0 - 255	ALL BLUE LED: 0% - 100%
8	0 - 255	ALL WHITE LED: 0% - 100%
9	0 - 255	COLOR MACROS
10	0 - 31	SHUTTER/STROBE
	32 - 63	LED OFF
	64 - 95	LED ON
	96 - 127	STROBING SLOW - FAST
	128 - 159	LED ON
	160 - 191	STROBE PULSE SLOW - FAST
	192 - 223	LED ON
	224 - 255	RANDOM STROBE SLOW - FAST
11	0 - 255	LED ON
12	0 - 255	MASTER DIMMER: 0% - 100%
13	0 - 255	DIMMER FINE: 0% - 100%
14	0 - 255	ZOOM: 7° - 58°
14	0	AUTO PROGRAMS
	1 - 20	OFF
	21 - 40	PROGRAM 1
	41 - 60	PROGRAM 2
	61 - 80	PROGRAM 3
	81 - 100	PROGRAM 4
	101 - 120	PROGRAM 5
	121 - 140	PROGRAM 6
	141 - 160	PROGRAM 7
	161 - 180	PROGRAM 8
	181 - 200	PROGRAM 9
	201 - 220	PROGRAM 10
	221 - 240	PROGRAM 11
	241 - 250	PROGRAM 12
	251 - 255	PROGRAM 13
		PROGRAM 14
15	0 - 255	PROGRAM SPEED: SLOW - FAST
16	0	AUTO PROGRAM FADE
	1 - 255	NORMAL SLOW - FAST

Channel	Value	Function
17	0 - 20	DIMMER MODE
	21 - 40	STANDARD
	41 - 60	STAGE
	61 - 80	TV
	81 - 100	ARCHITECTURAL
	101 - 255	THEATRE DEFAULT DIMMER SETTING
18	0 - 225	PAN/TILT SPEED
	226 - 235	FAST - SLOW
	236 - 255	BLACKOUT BY MOVEMENT
		NO FUNCTION
19	0 - 79	AUTO PROGRAMS
	80 - 84	NORMAL
	85 - 99	ALL MOTOR RESET
	101 - 119	NO FUNCTION
	120 - 139	INTERNAL PROGRAM 1
	140 - 159	INTERNAL PROGRAM 2
	160 - 179	INTERNAL PROGRAM 3
	180 - 199	INTERNAL PROGRAM 4
	200 - 219	INTERNAL PROGRAM 5
	220 - 239	INTERNAL PROGRAM 6
	240 - 255	INTERNAL PROGRAM 7
		NO FUNCTION

Channel	Value	Function
1	0 - 255	PAN MOVEMENT 8bit (540° or 630°)
2	0 - 255	PAN MOVEMENT FINE 16bit
3	0 - 255	TILT MOVEMENT 8bit
4	0 - 255	TILT MOVEMENT FINE 16bit
5	0 - 255	RED CENTER LED: 0% - 100%
6	0 - 255	GREEN CENTER LED: 0% - 100%
7	0 - 255	BLUE CENTER LED: 0% - 100%
8	0 - 255	WHITE CENTER LED: 0% - 100%
9	0 - 255	RED OUTER LED: 0% - 100%
10	0 - 255	GREEN OUTER LED: 0% - 100%
11	0 - 255	BLUE OUTER LED: 0% - 100%
12	0 - 255	WHITE OUTER LED: 0% - 100%
13	0 - 255	COLOR MACROS
14	0 - 31	SHUTTER/STROBE
	32 - 63	LED OFF
	64 - 95	LED ON
	96 - 127	STROBING SLOW - FAST
	128 - 159	LED ON
	160 - 191	STROBE PULSE SLOW - FAST
	192 - 223	LED ON
	224 - 255	RANDOM STROBE SLOW - FAST
15	0 - 255	LED ON
16	0 - 255	MASTER DIMMER: 0% - 100%
17	0 - 255	DIMMER FINE: 0% - 100%
18	0 - 255	ZOOM: 7° - 58°
18	0	AUTO PROGRAMS
	1 - 20	OFF
	21 - 40	PROGRAM 1
	41 - 60	PROGRAM 2
	61 - 80	PROGRAM 3
	81 - 100	PROGRAM 4
	101 - 120	PROGRAM 5
	121 - 140	PROGRAM 6
	141 - 160	PROGRAM 7
	161 - 180	PROGRAM 8
	181 - 200	PROGRAM 9
	201 - 220	PROGRAM 10
	221 - 240	PROGRAM 11
	241 - 250	PROGRAM 12
	251 - 255	PROGRAM 13
		PROGRAM 14

Channel	Value	Function
19	0 - 255	PROGRAM SPEED: SLOW - FAST
20	0 1 - 255	AUTO PROGRAM FADE NORMAL SLOW - FAST
21	0 - 20 21 - 40 41 - 60 61 - 80 81 - 100 101 - 255	DIMMER MODE STANDARD STAGE TV ARCHITECTURAL THEATRE DEFAULT DIMMER SETTING
22	0 - 225 226 - 235 236 - 255	PAN/TILT SPEED FAST - SLOW BLACKOUT BY MOVEMENT NO FUNCTION
23	0 - 79 80 - 84 85 - 99 101 - 119 120 - 139 140 - 159 160 - 179 180 - 199 200 - 219 220 - 239 240 - 255	AUTO PROGRAMS NORMAL ALL MOTOR RESET NO FUNCTION INTERNAL PROGRAM 1 INTERNAL PROGRAM 2 INTERNAL PROGRAM 3 INTERNAL PROGRAM 4 INTERNAL PROGRAM 5 INTERNAL PROGRAM 6 INTERNAL PROGRAM 7 NO FUNCTION

Color No.	DMX VALUE	RGBW COLOR INTENSITY				Color No.	DMX VALUE	RGBW COLOR INTENSITY			
		RED	GREEN	BLUE	WHITE			RED	GREEN	BLUE	WHITE
OFF	0	0	0	0	0	Color33	129-132	255	206	143	0
Color1	1-4	80	255	234	80	Color34	133-136	254	177	153	0
Color2	5-8	80	255	164	80	Color35	137-140	254	192	138	0
Color3	9-12	77	255	112	77	Color36	141-144	254	165	98	0
Color4	13-16	117	255	83	83	Color37	145-148	254	121	0	0
Color5	17-20	160	255	77	77	Color38	149-152	176	17	0	0
Color6	21-24	223	255	83	83	Color39	153-156	96	0	11	0
Color7	25-28	255	243	77	77	Color40	157-160	234	139	171	0
Color8	29-32	255	200	74	74	Color41	161-164	224	5	97	0
Color9	33-36	255	166	77	77	Color42	165-168	175	77	173	0
Color10	37-40	255	125	74	74	Color43	169-172	119	130	199	0
Color11	41-44	255	97	77	74	Color44	173-176	147	164	212	0
Color12	45-48	255	71	77	71	Color45	177-180	88	2	163	0
Color13	49-52	255	83	134	83	Color46	181-184	0	38	86	0
Color14	53-56	255	93	182	93	Color47	185-188	0	142	208	0
Color15	57-60	255	96	236	96	Color48	189-192	52	148	209	0
Color16	61-64	238	93	255	93	Color49	193-196	1	134	201	0
Color17	65-68	196	87	255	87	Color50	197-200	0	145	212	0
Color18	69-72	150	90	255	90	Color51	201-204	0	121	192	0
Color19	73-76	100	77	255	77	Color52	205-208	0	129	184	0
Color20	77-80	77	100	255	77	Color53	209-212	0	83	115	0
Color21	81-84	67	148	255	67	Color54	213-216	0	97	166	0
Color22	85-88	77	195	255	77	Color55	217-220	1	100	167	0
Color23	89-92	77	234	255	77	Color56	221-224	0	40	86	0
Color24	93-96	158	255	144	144	Color57	225-228	209	219	182	0
Color25	97-100	255	251	153	153	Color58	229-232	42	165	85	0
Color26	101-104	255	175	147	147	Color59	233-236	0	46	35	0
Color27	105-108	255	138	186	186	Color60	237-240	8	107	222	0
Color28	109-112	255	147	251	251	Color61	241-244	107	156	231	0
Color29	113-116	151	138	255	255	Color62	245-248	165	198	247	0
Color30	117-120	99	0	255	255	Color63	249-252	0	0	189	0
Color31	121-124	138	169	255	255	Color64	253-255	255	255	255	0
Color32	125-128	255	255	255	255						

Vizi Q Wash7

System Menu

Receive	Set Address	A001~AXXX		
User Mode	User Mode	Standard , Basic, Extend, UserA, UserB, UserC		
	Edit A Edit B Edit C	MaxChannel PAN :		
Function	Status	RemoteAdd NoDMXMode PanInvert TiltInvert PanDegree Feedback Move.Spd Standby	ON/OFF Blackout/ Hold /Auto ON/OFF ON/OFF 630/ 540 ON/OFF Speed 1~4 OFF, 01M~99M, 15M	
	Fixture ID	ServicePIN RDMPID	Password=xxx xxxxxx	Password=050
	Fan Set	HeadFan	Auto , High, Low	
	LCD.Set	Backlight FlipDisplay KeyLock DispFlash	02~60m <05m> ON/OFF ON/OFF ON/OFF	
	DimCurve	Standard , Stage, TV, Architectural, Theatre		
	Temp.C/F	Celsius, Fahrenheit		
	Init.Effect	PAN=XXX		
	Wireless	OFF...CHOO~14		
	Disp.Set	Chan.Value SEcd Set Auto.Pro	PAN.... Secd 1, Secd 2, Secd 3 Primary / Alone	
	DFSE	ON/OFF		
Information	Time.Info	Current TotalTime LastClear TimerPIN ClearLast	Check the current running time (H) Total Time (Hours) Clear the running time of fixture (Hours) (Password=050) ON/OFF	
	Temp.Info	HeadTemp		
	Error.Info	Pan, Tilt....		
	Model.Info	VIZIOWASH7		
	Software.V	1U01V1.01...: 2U01V1.01...: 3U01V1.01...: 3U02V1.01...:		
Test	Reset	Pan&Tilt		
	Test.Chan	PAN...		
	Panel.Ctrl	PAN=XXX		
	Calibrate	-Password- PAN :		
Program	Select.Pro	Pro.Part1 = Program1 ~ 9Program1 Pro.Part2 = Program1 ~ 9Program2 Pro.Part3 = Program1 ~ 9Program3		
	Edit.Pro	Program1 : Program9	ProgramTest Step 01=SCxxx Step64=SCxxx	
	Edit.Sce	EditScene001 ~EditScene250	Pan, Tilt, FateTime SceneTime InputByOutside	
	Sce.Input	XX~XX		Video Scenes Automatically

The main menu is accessed by pressing the MODE button. Browse through the menu by using the UP, DOWN, RIGHT, & LEFT buttons. Press the ENTER button to access the desired menu. You can scroll through the sub-menus using the UP, DOWN, RIGHT, & LEFT buttons. To confirm every selection press the ENTER button. You can exit every menu and sub-menu by pressing the MODE button. The unit will automatically exit the menus if no buttons are pressed after 10 seconds. These next pages will explain each function in the menu layout located on the previous page.

RECEIVE -

Set Address - With this function, you can adjust the desired DMX-address via the Control Board.

1. Access the main menu, and press the UP or DOWN buttons so that “**Receive**” is highlighted, then press ENTER.
2. “**Set Address**” will now be displayed, press ENTER. The current DMX address will now be displayed.
3. Use the UP or DOWN buttons to adjust the DMX address.
4. Press ENTER to confirm or press MODE to return to the main menu.

USER MODE

User Mode - This mode will let you select your desired DMX Channel mode.

1. Press the MODE button to access the main menu. Press the UP or DOWN buttons so that “**User Mode**” is highlighted, then press ENTER.
2. Press the LEFT or RIGHT buttons until “**User Mode**” is displayed, press ENTER.
3. Use the LEFT or RIGHT buttons to scroll through the 3 DMX Channel Modes.

Standard Mode - This is 19 Channel Mode.

Basic Mode - This is 17 Channel Mode.

Extended Mode - This is 23 Channel Mode.

User Mode A B C - These are customizable DMX modes. Select either of these modes and set the amount of DMX Channels and what each channel does.

4. Press the MODE button once to return to the “**User Mode Set**” menu.

Function -**Status**

Address via DMX - With this function you can adjust the DMX address via external controller.

1. Press the MODE button to access the main menu. Press the UP or DOWN buttons so that "**Function**" is highlighted, then press ENTER.
2. Press the LEFT or RIGHT buttons until "**Status**" is displayed, press ENTER.
3. Press LEFT or RIGHT buttons, until "**Remote Add**" is displayed, and press ENTER.
4. Either "**Off**" or "**On**" will be displayed, use the UP and DOWN buttons to toggle between.
5. Press ENTER to confirm your selection or press MODE to exit.

To use this function follow these instructions:

To adjust the address of your unit you must first go to the address that it is currently set to. From there you can adjust the address. First make sure all channels are set to the value of "0".

1. On your DMX controller set the DMX value of Channel 1 to the value "7".
2. Now set the DMX value of Channel 2 to the value "7" to adjust the starting address between 1 and 255. To adjust the address between 256 and 511 set Channel 2 to the value "8".
3. Set the DMX value of Channel 3 to your desired starting address. This will take about 20 seconds before the unit accepts the new DMX address.

1ST EXAMPLE: If you want the address to be 57, you must first set the address that is currently assigned to the unit. Then set Channel 1's value to "7", Channel 2's value to "7", and Channel 3's value to "57". Wait 20 seconds and the address should change on the unit to "57".

2ND EXAMPLE: If you want the address to be 420, you must first set the address that is currently assigned to the unit. If you want the set the address to 420, set Channel 1's value to "7", Channel 2's value to "8", and Channel 3's to "164". ($256 + 164 = 420$).

No DMX Mode - With this function if the DMX signal is suddenly lost, the unit will automatically go into 1 of 3 modes.

1. Press the MODE button to access the main menu. Press the UP or DOWN buttons so that "**Function**" is highlighted, then press ENTER.
2. Press the LEFT or RIGHT buttons until "**Status**" is displayed, press ENTER.
3. Press LEFT or RIGHT buttons, until "**No DMX Mode**" is displayed, and press ENTER.
4. Either "**Hold**" (Last DMX setting), "**Blackout**", or "**Auto**" (Auto Program) will be displayed, use the LEFT or RIGHT buttons to toggle between.
5. Press ENTER to confirm your selection or press MODE to exit.

Pan Invert - With this function you can reverse the Pan movement.

1. Press the **MODE** button to access the main menu. Press the UP or DOWN buttons so that “**Function**” is highlighted, then press ENTER. This function is used with DMX mode.
2. Press the LEFT or RIGHT buttons until “**Status**” is displayed, press ENTER.
3. Press LEFT or RIGHT buttons, until “**Pan Invert**” is displayed, and press ENTER.
4. Either “**Off**” or “**On**” will be displayed, use the LEFT or RIGHT buttons to toggle between.
5. Press ENTER to confirm your selection or press MODE to exit.

Tilt Invert - With this function you can reverse the left head Tilt movement. This function is used with DMX mode.

1. Press the **MODE** button to access the main menu. Press the UP or DOWN buttons so that “**Function**” is highlighted, then press ENTER.
2. Press the LEFT or RIGHT buttons until “**Status**” is displayed, press ENTER.
3. Press LEFT or RIGHT buttons, until “**Tilt Invert**” is displayed, and press ENTER.
4. Either “**Off**” or “**On**” will be displayed, use the LEFT or RIGHT buttons to toggle between.
5. Press ENTER to confirm your selection or press MODE to exit.

Pan Degree - With this function you can change the pan degree from 630 to 540. This function is used with DMX mode.

1. Press the **MODE** button to access the main menu. Press the UP or DOWN buttons so that “**Function**” is highlighted, then press ENTER.
2. Press the LEFT or RIGHT buttons until “**Status**” is displayed, press ENTER.
3. Press LEFT or RIGHT buttons, until “**Pan Degree**” is displayed, and press ENTER.
4. Either “**540**” or “**630**” will be displayed, use the LEFT or RIGHT buttons to toggle between.
5. Press ENTER to confirm your selection or press MODE to exit.

Feedback - With this function, you have the pan and tilt position feedback while out of step or not feedback while out of step.

1. Press the **MODE** button to access the main menu. Press the UP or DOWN buttons so that “**Function**” is highlighted, then press ENTER.
2. Press the LEFT or RIGHT buttons until “**Status**” is displayed, press ENTER.
3. Press LEFT or RIGHT buttons, until “**Feedback**” is displayed, and press ENTER.
4. Either “**Off**” or “**On**” will be displayed, use the LEFT or RIGHT buttons to toggle between.
5. Press ENTER to confirm your selection or press MODE to exit.

Movement Speed - With this function you can set the pan and tilt movement speed.

1. Press the MODE button to access the main menu. Press the UP or DOWN buttons so that **"Function"** is highlighted, then press ENTER.
2. Press the LEFT or RIGHT buttons until **"Status"** is displayed, press ENTER.
3. Press LEFT or RIGHT buttons, until **"Move. Speed"** is displayed, and press ENTER.
4. Either **"Speed 1"**, **"Speed 2"**, **"Speed 3"** or **"Speed 4"** will be displayed, use the LEFT or RIGHT buttons to toggle between.
5. Press ENTER to confirm your selection or press MODE to exit.

Stand By - With this function the LEDs and step motors will power off if there is no DMX signal within 15-mins. (factory default). Once it receives a DMX signal, the fixture will reset itself.

1. Press the MODE button to access the main menu. Press the UP or DOWN buttons so that **"Function"** is highlighted, then press ENTER.
2. Press the LEFT or RIGHT buttons until **"Status"** is displayed, press ENTER.
3. Press LEFT or RIGHT buttons, until **"Stand By"** is displayed, and press ENTER.
4. The current stand by setting will be displayed, use the LEFT or RIGHT buttons to adjust the hibernation period between 01M-99M or **"Off"**.
5. Press ENTER to confirm your selection or press MODE to exit.

Fixture ID

Password - With this function you can enter the RDM password so that you can access and change the RDM ID number.

1. Press the MODE button to access the main menu. Press the UP or DOWN buttons so that **"Function"** is highlighted, then press ENTER.
2. Press the LEFT or RIGHT buttons until **"Fixture ID"** is displayed, press ENTER.
3. Press the LEFT or RIGHT buttons until **"ServicePIN"** is displayed, press ENTER.
4. The **"Password"** is 050.
5. Press ENTER or press MODE to exit.

RDM PID - RDM stands for "Remote Device Management". This feature lets you control every aspect of your fixture remotely from an RDM controller. Manual settings like adjusting the DMX address are no longer needed. This is especially useful when the unit is installed in a remote area. In this sub-menu you can see the units RDM ID number and adjust it as well.

1. Press the MODE button to access the main menu. Press the UP or DOWN buttons so that **"Function"** is highlighted, then press ENTER.
2. Press the LEFT or RIGHT buttons until **"Fixture ID"** is displayed, press ENTER.
3. Press LEFT or RIGHT until **"RDM PID"** is displayed, and press ENTER.
4. **"XXXXXX"** will be displayed. **"XXXXXX"** represents the units current RDM ID.
5. Press ENTER or press MODE to exit.

Fan Set

Fan Set - With this function, you can control the fan speed.

1. Access the main menu, and press the UP or DOWN buttons so that **"Function"** is highlighted, then press ENTER.
2. Press the LEFT or RIGHT buttons until **"Fan Set"** is displayed, and press ENTER. The current setting will now be displayed.
3. **"Head Fan"** will now be displayed, press ENTER.
4. Use the LEFT or RIGHT buttons to make the adjustments to the fan.
5. Press ENTER to confirm your selection or press the MODE button to return to the main menu.

LCD.Set

Backlight - With this function you can have the LCD display after 2-60 minutes. Use this function to adjust the time.

1. Press the MODE button to access the main menu. Press the UP or DOWN buttons so that **"Function"** is highlighted, then press ENTER.
2. Press the LEFT or RIGHT buttons until **"LCD.Set"** is displayed, press ENTER.
3. Press LEFT or RIGHT buttons, until **"Backlight"** is displayed, and press ENTER.
4. **"05m"** (5 minutes) will be displayed, use the LEFT or RIGHT buttons to adjust the shutoff time between 02m-60m or **"Off"**.
5. Press ENTER to confirm your selection or press MODE to exit.

Flip Display - With this function you can rotate (flip) the display 180 degrees.

1. Press the MODE button to access the main menu. Press the UP or DOWN buttons so that **"Function"** is highlighted, then press ENTER.
2. Press the LEFT or RIGHT buttons until **"LCD.Set"** is displayed, press ENTER.
3. Press LEFT or RIGHT buttons, until **"Flip Display"** is displayed, and press ENTER.
4. Either **"Off"** or **"On"** will be displayed, use the LEFT or RIGHT buttons to toggle between.
5. Press ENTER to confirm your selection or press MODE to exit.

Key Lock - With this function activated the buttons will lock automatically after 15 seconds.

1. Press the MODE button to access the main menu. Press the UP or DOWN buttons so that **"Function"** is highlighted, then press ENTER.
2. Press the LEFT or RIGHT buttons until **"LCD.Set"** is displayed, press ENTER.
3. Press LEFT or RIGHT buttons, until **"Key Lock"** is displayed, and press ENTER.
4. Either **"Off"** or **"On"** will be displayed, use the LEFT or RIGHT buttons to toggle between.
5. Press ENTER to confirm your selection or press MODE to exit.

DispFlash - With this function active, the display will flash when the DMX signal is lost.

1. Press the MODE button to access the main menu. Press the UP or DOWN buttons so that “**Function**” is highlighted, then press ENTER.
2. Press the LEFT or RIGHT buttons until “**LCD.Set**” is displayed, press ENTER.
3. Press LEFT or RIGHT buttons, until “**DispFlash**” is displayed, and press ENTER.
4. Either “**Off**” or “**On**” will be displayed, use the LEFT or RIGHT buttons to toggle between.
5. Press ENTER to confirm your selection or press MODE to exit.

Dim Curve

Dim Curve - With this function you can change dimmer curve setting for LED. See page 44 for the Dimmer Curve Chart.

1. Press the MODE button to access the main menu. Press the UP or DOWN buttons so that “**Function**” is highlighted, then press ENTER.
2. Press the LEFT or RIGHT buttons until “**Dim Curve**” is displayed, press ENTER.
3. The current dimmer curve setting will now be displayed.
4. Use the LEFT or RIGHT buttons to find your desired dimmer curve setting.
5. Press ENTER to confirm your selection or press MODE to exit.

Temperature C/F

Temperature C/F - With this function, you can change the temperature display to show either Celsius or Fahrenheit.

1. Press the MODE button to access the main menu. Press the UP or DOWN buttons so that “**Function**” is highlighted, then press ENTER.
2. Press LEFT or RIGHT buttons, until “**Temp. C/F**” is displayed, and press ENTER.
3. Either “**Celsius**” or “**Fahrenheit**” will be displayed, use the LEFT or RIGHT buttons to toggle between.
4. Press ENTER to confirm your selection or press MODE to exit.

Init.Effect

Init.Effect - In this menu you are able to check the initial effect position.

1. Press the MODE button to access the main menu. Press the UP or DOWN buttons so that “**Function**” is highlighted, then press ENTER.
2. Press the UP or DOWN buttons until “**Init.Effect**” is displayed, press ENTER.
3. “**XXX**” will be displayed. “**XXX**” represents the current effect position.
4. Press ENTER or press MODE to exit.

Wireless On/Off and Address:

This function is used to activate WiFly and set the wireless address.

This address must match the address that is set to WiFly TransCeiver or WiFly controller.

1. Plug the fixture in and access the main menu. Press the UP or DOWN buttons until **“Function”** is displayed, and press ENTER.
2. Press the LEFT or RIGHT buttons until **“Wireless”** is displayed. **“XX”** represents the current displayed address. Press ENTER to access, and use the LEFT or RIGHT buttons to adjust the wireless channel.
3. When you are finished making your adjustment press ENTER and press the MODE button to exit this menu.

Disp. Set

Chan. Value - This function will allow you to see the DMX value of each DMX channel that is currently being used at the time.

1. Access the main menu, and press the UP or DOWN buttons so that **“Function”** is highlighted, then press ENTER.
2. Press the LEFT or RIGHT buttons until **“Chan. Value”** is displayed, and press ENTER.
3. A DMX Channel will be displayed. Example: Pan, Rotation, LED's etc... Press ENTER when you find the DMX channel that you would like to check. When you press ENTER the DMX value of that channel will displayed.
4. Press the MODE button to exit.

SEcd Set - This function lets you designate the unit as the Secondary unit in a Primary-Secondary configuration.

1. Access the main menu, and press the UP or DOWN buttons so that **“Function”** is highlighted, then press ENTER.
2. Press the LEFT or RIGHT buttons until **“SEcd Set”** is displayed, and press ENTER.
3. Either **SEcd 1**, **SEcd 2**, or **SEcd 3** will be displayed. Use the LEFT or RIGHT buttons to find your desired setting and press ENTER, or the press MODE button to exit.

Auto. Pro - This function allows the internal programs to run in either stand-alone or primary/secondary mode. In “Primary” mode the fixture will send DMX data to other fixtures connect via the DMX chain. In “Alone” mode, the fixture will operate as a single fixture. The program for this mode is selected in the “**Select program**” section of the control menu. You can set the number of steps under “**Edit program**”. You can edit the individual scenes under “Edit scenes”. With this function, you can run the individual scenes either automatically, i.e. with the adjusted Step-Time.

1. Access the main menu, and press the UP or DOWN buttons so that “**Function**” is highlighted, then press ENTER.
2. Press the LEFT or RIGHT buttons until “**Auto. Pro**” is displayed, and press ENTER.
3. Either “**Primary**” or “**Alone**” will be displayed. Use the LEFT or RIGHT buttons to find your desired setting.
4. Press ENTER to make your selection, or press MODE button to exit.

DFSE

DFSE - With this function you can restore the factory settings.

1. Access the main menu, and press the UP or DOWN buttons so that “**Function**” is highlighted, then press ENTER.
2. Press the LEFT or RIGHT buttons so that “**DFSE**” is highlighted, then press ENTER.
3. Either “**Off**” or “**On**” will be displayed, use the LEFT or RIGHT buttons to toggle between. Selecting “**On**” will restore the factory settings.
4. Press ENTER to confirm your selection or press MODE to exit.

INFORMATION

Time. Info (Time information is always represented in hours)

Current - This will allow you to check units current running time since power has been activated.

1. Press the MODE button to access the main menu. Press the UP or DOWN buttons so that “**Information**” is highlighted, then press ENTER.
2. Press the LEFT or RIGHT buttons until “**Time. Info**” is displayed, press ENTER.
3. Press LEFT or RIGHT buttons, until “**Current**” is displayed, and press ENTER.
4. “**XXXX**” will now be displayed. “**XXXX**” represents the current running time.
5. Press ENTER or press MODE to exit.

Total Time - This will allow you to check units total running time.

1. Press the MODE button to access the main menu. Press the UP or DOWN buttons so that “**Information**” is highlighted, then press ENTER.
2. Press the LEFT or RIGHT buttons until “**Time. Info**” is displayed, press ENTER.
3. Press LEFT or RIGHT buttons, until “**Total Time**” is displayed, and press ENTER.
4. “**XXXX**” will now be displayed. “**XXXX**” represents the total running time.
5. Press ENTER or press MODE to exit.

Last Clear - This will show you the last time the time was cleared.

1. Press the MODE button to access the main menu. Press the UP or DOWN buttons so that “**Information**” is highlighted, then press ENTER.
2. Press the LEFT or RIGHT buttons until “**Time. Info**” is displayed, press ENTER.
3. Press LEFT or RIGHT buttons, until “**Last Clear**” is displayed, and press ENTER.
4. Either “**Off**” or “**On**” will be displayed, use the LEFT or RIGHT buttons to toggle between.
5. Press ENTER to confirm your selection or press MODE to exit.

Timer Pin - Timer Pin will allow you to clear the running time. See Clear Last for more information.

1. Press the MODE button to access the main menu. Press the UP or DOWN buttons so that “**Information**” is highlighted, then press ENTER.
2. Press the LEFT or RIGHT buttons until “**Time. Info**” is displayed, press ENTER.
3. Press LEFT or RIGHT buttons, until “**Timer Pin**” is displayed, and press ENTER.
4. The “**Timer Pin**” is 050.
5. Press ENTER to confirm or press MODE to exit.

Clear Last - This will allow you to clear the LED running time. You need to put in the **Timer Pin** before doing this. Please see **Timer Pin**.

1. Press the MODE button to access the main menu. Press the UP or DOWN buttons so that “**Information**” is highlighted, then press ENTER.
2. Press the LEFT or RIGHT buttons until “**Time. Info**” is displayed, press ENTER.
3. Press LEFT or RIGHT buttons, until “**Clear Last**” is displayed, and press ENTER.
4. Either “**Off**” or “**On**” will be displayed, use the LEFT or RIGHT buttons to toggle between.
5. Press ENTER to confirm or press MODE to exit.

Temp. Info - This will allow you to check the moving head temperature.

1. Press the MODE button to access the main menu. Press the UP or DOWN buttons so that “**Information**” is highlighted, then press ENTER.
2. Press the LEFT or RIGHT buttons until “**Temp. Info**” is displayed, press ENTER.
3. “**Head Temp.**” will now be displayed, press ENTER.
4. “**XXX**” will now be displayed. “**XXX**” represents the current temperature of the moving head.
5. Press MODE to exit.

Error. Info - This will allow you to see any errors that have occurred.

1. Press the MODE button to access the main menu. Press the UP or DOWN buttons so that “**Information**” is highlighted, then press ENTER.
2. Press the LEFT or RIGHT buttons until “**Error. Info**” is displayed, press ENTER.
3. Any errors that have occurred to Pan, Tilt, etc will now be displayed.
4. Press MODE to exit.

Model. Info - This will allow you to see the model name

1. Press the MODE button to access the main menu. Press the UP or DOWN buttons so that “**Information**” is highlighted, then press ENTER.
2. Press the LEFT or RIGHT buttons until “**Model. Info**” is displayed, press ENTER.
3. The model name will now be displayed.
4. Press MODE to exit.

Software. V - This will allow you to see the software version you are currently running.

1. Press the MODE button to access the main menu. Press the UP or DOWN buttons so that “**Information**” is highlighted, then press ENTER.
2. Press the LEFT or RIGHT buttons until “**Software. V**” is displayed, press ENTER.
3. The software version will now be displayed.
4. Press MODE to exit.

TEST

Reset. M - With this function you can reset the Pan & Tilt motors.

1. Press the MODE button to access the main menu. Press the UP or DOWN buttons so that “**Test**” is highlighted, then press ENTER.
2. Press the LEFT or RIGHT buttons until “**Reset. M**” is displayed.
3. Press ENTER to reset or press MODE to exit.

Test. Chan - With this function you can test each channel function.

1. Press the MODE button to access the main menu. Press the UP or DOWN buttons so that “**Test**” is highlighted, then press ENTER.
2. Press the LEFT or RIGHT buttons until “**Test. Chan**” is displayed, press ENTER.
3. Use the LEFT or RIGHT buttons to scroll through the various channels.
4. Press ENTER to select a channel to test or press MODE to exit.

Panel. Ctrl - With this function you can make fine adjustments.

1. Press the MODE button to access the main menu. Press the UP or DOWN buttons so that “**Test**” is highlighted, then press ENTER.
2. Press the LEFT or RIGHT buttons until “**Panel. Ctrl**” is displayed, press ENTER.
3. Use the LEFT or RIGHT buttons to scroll through the various functions.
4. Press ENTER when you find the function you would like to adjust or press MODE to exit.

Calibrate - With this function you can calibrate and adjust the effects wheels to their correct positions. The Calibration password 050.

NOTE: ONLY QUALIFIED TECHNICIANS SHOULD PERFORM THIS FUNCTION.

1. Press the MODE button to access the main menu. Press the UP or DOWN buttons so that “**Test**” is highlighted, then press ENTER.
2. Press the LEFT or RIGHT buttons until “**Calibrate**” is displayed, press ENTER.
3. “XXXX” will be displayed. The password is 050.
4. Press ENTER to confirm or press MODE to exit.

PROGRAM

EDIT PROGRAM: - The fixture comes equipped with a built-in DMX recorder that allows custom programs to be installed and recalled directly from the fixture's control board. Programs can be created and stored using the fixture's control board or by using an external DMX controller.

Select. Pro – This function allows the user to select one of nine of the user defined built-in programs. This program is then accessed in “Function Mode” under “Program Run.”

Edit. Pro – This function allows the user to edit the built-in programs.

Edit. Sce – This function allows the user to edit or define the actual scenes that are stored in the user defined built-in programs that are accessed in the previous step.

Sce. Input - The Vizi Q Wash7 features an integrated DMX recorder. Preprogrammed scenes can be transmitted to the fixture via any DMX compliant controller. This function allows those scenes to be stored in to the fixture's built-in memory and then subsequently used to create the user-defined programs.

Stand-Alone (Auto Program): This mode allows a single unit to run through a built-in program.

AUTO PROGRAM:

1. Access the main menu, and press the UP or DOWN buttons so that **“Function”** is highlighted, then press ENTER.
2. Press the UP or DOWN buttons until **“Disp. Set”** is displayed, and press ENTER.
3. Press the UP or DOWN buttons until **“Auto. Pro”** is displayed, and press ENTER.
4. Either **“Primary”** or **“Alone”** will be displayed. Using the UP or DOWN buttons select **“Alone”** and press ENTER.

Primary-Secondary Configuration (Auto Program): This function will allow you to link up to 16 units together and operate without a controller. In a Primary-Secondary set up, one unit will act as the controlling unit and the others will react to the controlling units programs. Any unit can act as a Primary or as a Secondary.

1. Using standard XLR cables, daisy chain your units together via the XLR connector on the rear of the units. Remember the Male XLR connector is the input and the Female XLR connector is the output. The first unit in the chain (primary) will use the female XLR connector only - The last unit in the chain will use the male XLR connector only. For longer cable runs we suggest a terminator at the last fixture.
2. On your **“Primary”** unit, access the main menu, and press the UP or DOWN buttons so that **“Function”** is highlighted, then press ENTER.
3. Press the UP or DOWN buttons until **“Disp. Set”** is displayed, and press ENTER.
4. Use the UP or DOWN buttons to highlight **“Auto. Pro”** and press ENTER.
5. Either **“Primary”** or **“Alone”** will be displayed. Using the UP or DOWN buttons select **“Primary”** and press ENTER.
6. For your **“Secondary”** units, access the main menu, and press the UP or DOWN buttons so that **“Function”** is highlighted, then press ENTER.
7. Press the UP or DOWN buttons until **“Disp. Set”** is displayed, and press ENTER.
8. Press the UP or DOWN buttons until **“SEcd Set”** is displayed, and press ENTER.
9. Either Secd 1, SEcd 2, or SEcd 3 will be displayed. Select your desired Secondary setting and press ENTER.
10. Press MODE if you want to return to the main menu.
11. You may invert the pan and tilt functions in the system menu by following the directions on page 24.

With this feature you are able to control the unit with DMX without the need of XLR cables. Your DMX controller must be connected to a ADJ WiFly TransCeiver to use this function. You are able to communicate up to 2500 feet/760 meters (open line of sight).

1. Follow the instructions on page 33 to activate WiFly and set the Wireless address. The address must match the address set on the WiFly Transceiver.
2. After you have set the WiFly address, follow the DMX instructions on page 24 to select your desired DMX Channel mode and set your DMX address.
3. Apply power to the ADJ WiFly Transceiver. The fixture must be set up first before you apply power to WiFly Transceiver.

Note: If the sync does not work, switch the WiFly power off then on again.

This feature will let you link units to run in a primary-secondary mode without the use of XLR cables.

1. Follow the instructions on page 33 to activate WiFly and set the Wireless address. The address must match the address set on the WiFly Transceiver.
2. After you have set the WiFly address, select your primary unit and set your desired operating mode.
3. For the Secondary units, put the unit in Secondary mode. See page 40 Primary-Secondary configuration when setting the unit as a Secondary.

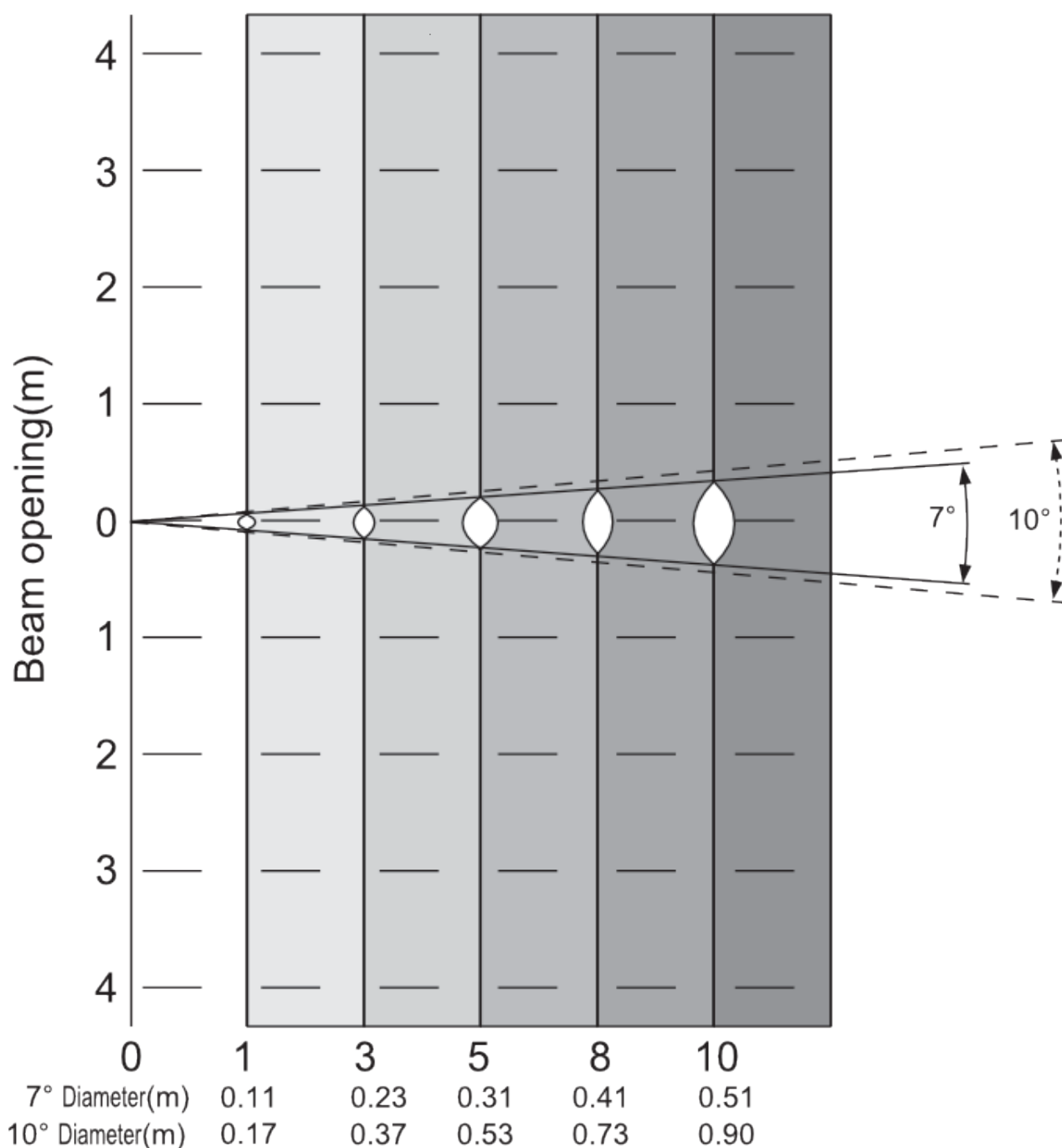
NOTE: If they do not sync up primary-secondary, switch the Primary fixtures WiFly off then on again.

Beam angle 7°

Field angle 10°

Intensity(LUX)

Red LEDs	19560	8340	4121	2532	1718
Green LEDs	37330	17060	8374	5127	3410
Blue LEDs		3087	1302	809	484
White LEDs	45140	20890	10130	6020	4002
Full LEDs		49010	24330	14000	9387

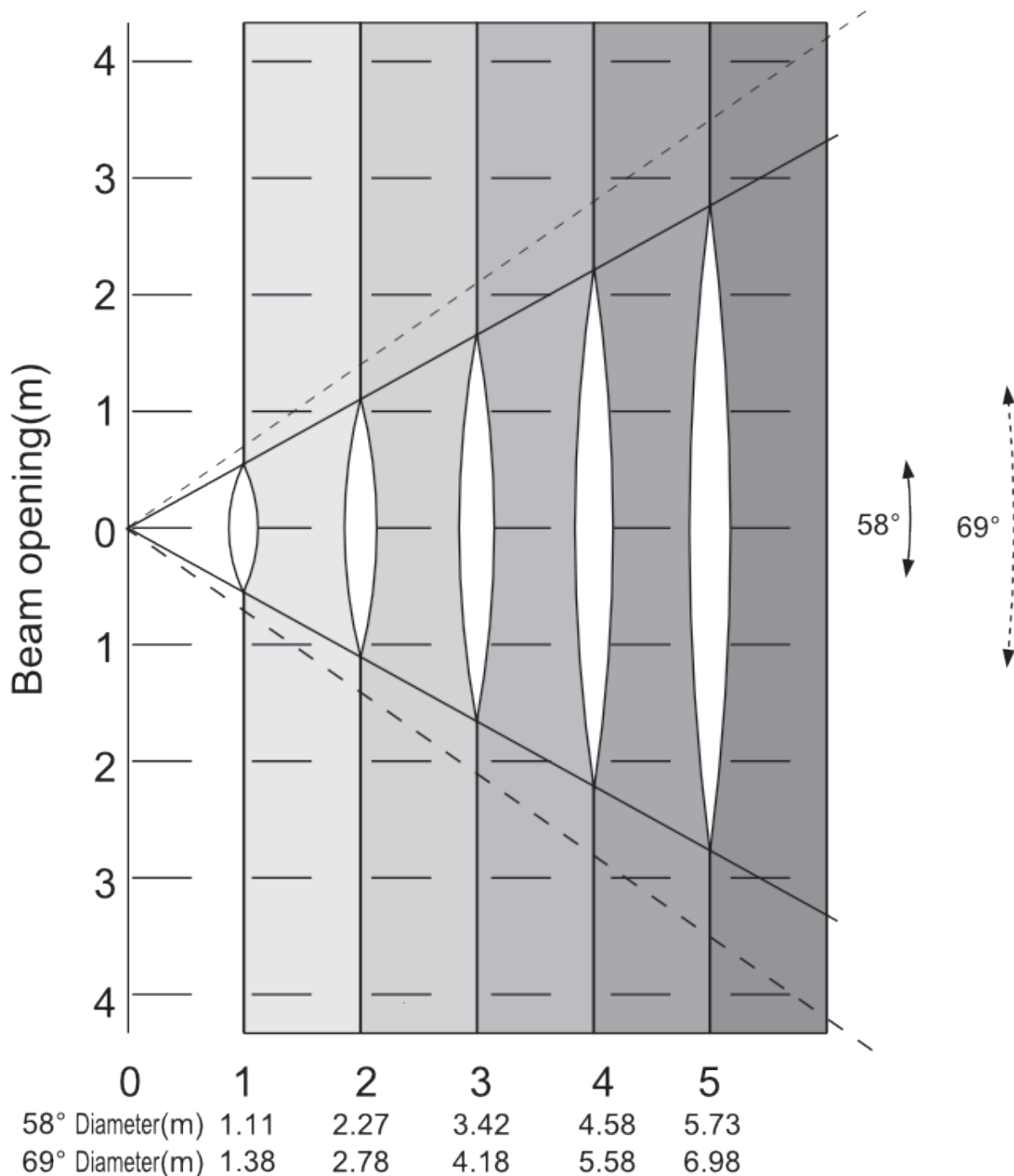


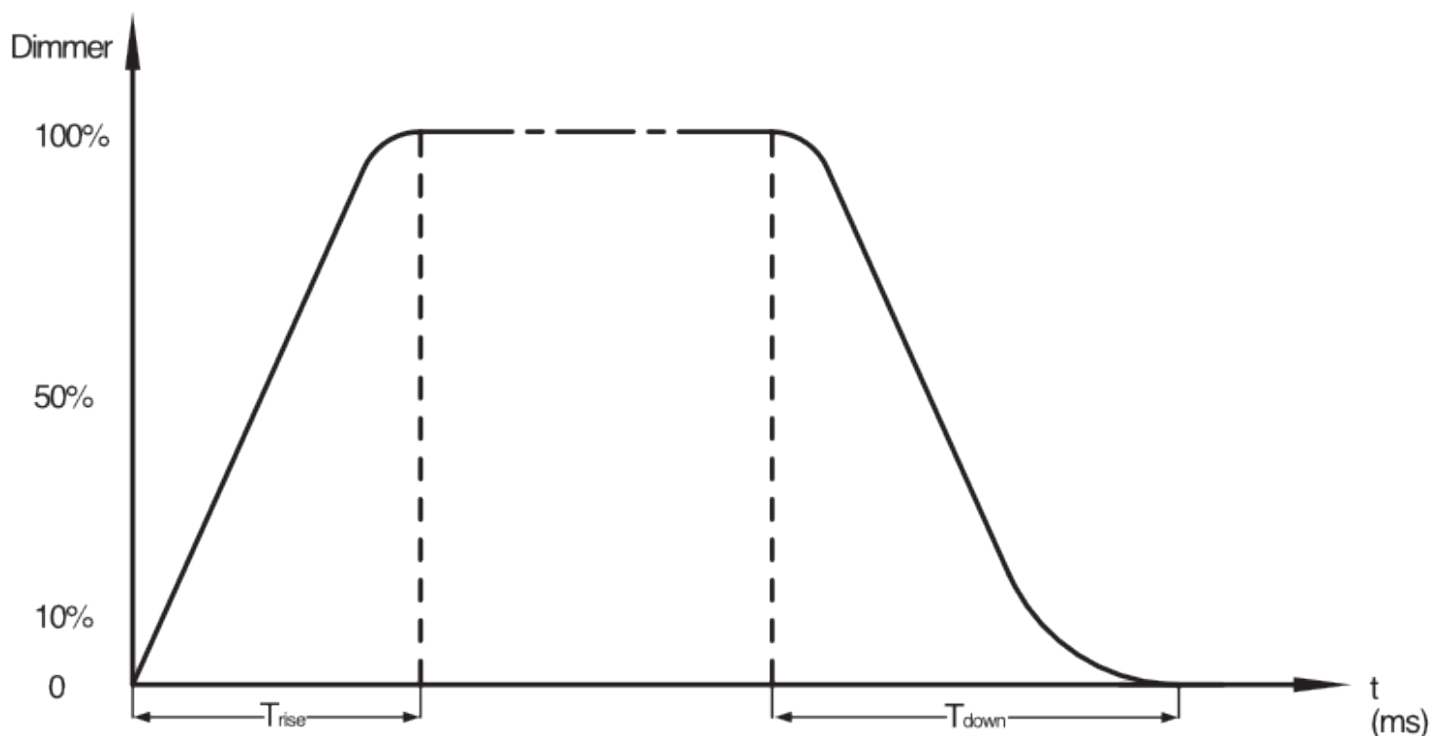
Beam angle 58°


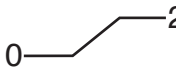
Field angle 69°

Intensity(LUX)

Red LEDs	1551	408	173	101	62
Green LEDs	2998	787	251	198	128
Blue LEDs	500	122	49	23	11
White LEDs	3567	934	417	236	154
Full LEDs	8205	2200	984	565	372





Ramp Effect	0  255 0S (Fade Time)		0  255 1S (Fade Time)	
	T_{rise}	T_{down} (ms)	T_{rise} (ms)	T_{down} (ms)
Standard	0	0	0	0
Stage	780	1100	1540	1660
TV	1180	1520	1860	1940
Architectural	1380	1730	2040	2120
Theatre	1580	1940	2230	2280

With this feature you can connect the fixtures to one another using the locking power input and output sockets. The quantity that can be connected is 3 fixtures maximum @110V and a maximum 5 fixture's @240V. After maximum limit has been reached you will need to use a new power outlet. They must be the same fixtures. **DO NOT** mix fixtures.

Fuse Replacement: First unplug the power. The fuse holder is located above the power connection. Using a flat head screw driver unscrew the fuse holder. Remove the bad fuse and replace with a new one.

Fixture Cleaning: Due to fog residue, smoke, and dust cleaning the internal and external optical lenses and mirror should be carried out periodically to optimize light output. Cleaning frequency depends on the environment in which the fixture operates (i.e. smoke, fog residue, dust, dew). In heavy club use we recommend cleaning on a monthly basis. Periodic cleaning will ensure longevity, and crisp output.

1. Use normal glass cleaner and a soft cloth to wipe down the outside casing.
2. Use a brush to wipe down the cooling vents and fan grill.
3. Clean the external optics and mirror with glass cleaner and a soft cloth every 20 days.
4. Clean the internal optics with glass cleaner and a soft cloth every 30-60 days.
5. Always be sure to dry all parts completely before plugging the unit back in.

Trouble Shooting: Listed below are a few common problems that you may encounter, with solutions.

No light output from the unit:

1. Be sure the external fuse has not blown. The fuse is located on the back panel of the unit above the power input connection.
2. Be sure the fuse holder is completely and properly seated.

Unit does not respond to sound:

1. Low frequencies (bass) should cause the unit to react to sound. Tapping on the microphone, quiet or high pitched sounds may not activate the unit.

MANUFACTURER'S LIMITED WARRANTY

- A. ADJ Products, LLC hereby warrants, to the original purchaser, ADJ Products, LLC products to be free of manufacturing defects in material and workmanship for a prescribed period from the date of purchase (see specific warranty period on reverse). This warranty shall be valid only if the product is purchased within the United States of America, including possessions and territories. It is the owner's responsibility to establish the date and place of purchase by acceptable evidence, at the time service is sought.
- B. For warranty service you must obtain a Return Authorization number (RA#) before sending back the product—please contact ADJ Products, LLC Service Department at 800-322-6337. Send the product only to the ADJ Products, LLC factory. All shipping charges must be pre-paid. If the requested repairs or service (including parts replacement) are within the terms of this warranty, ADJ Products, LLC will pay return shipping charges only to a designated point within the United States. If the entire instrument is sent, it must be shipped in its original package. No accessories should be shipped with the product. If any accessories are shipped with the product, ADJ Products, LLC shall have no liability whatsoever for loss of or damage to any such accessories, nor for the safe return thereof.
- C. This warranty is void if the serial number has been altered or removed; if the product is modified in any manner which ADJ Products, LLC concludes, after inspection, affects the reliability of the product; if the product has been repaired or serviced by anyone other than the ADJ Products, LLC factory unless prior written authorization was issued to purchaser by ADJ Products, LLC; if the product is damaged because not properly maintained as set forth in the instruction manual.
- D. This is not a service contract, and this warranty does not include maintenance, cleaning or periodic check up. During the period specified above, ADJ Products, LLC will replace defective parts at its expense with new or refurbished parts, and will absorb all expenses for warranty service and repair labor by reason of defects in material or workmanship. The sole responsibility of ADJ Products, LLC under this warranty shall be limited to the repair of the product, or replacement thereof, including parts, at the sole discretion of ADJ Products, LLC. All products covered by this warranty were manufactured after August 15, 2012, and bear identifying marks to that effect.
- E. ADJ Products, LLC reserves the right to make changes in design and/or improvements upon its products without any obligation to include these changes in any products theretofore manufactured.

No warranty, whether expressed or implied, is given or made with respect to any accessory supplied with products described above. Except to the extent prohibited by applicable law, all implied warranties made by ADJ Products, LLC in connection with this product, including warranties of merchantability or fitness, are limited in duration to the warranty period set forth above. And no warranties, whether expressed or implied, including warranties of merchantability or fitness, shall apply to this product after said period has expired. The consumer's and/or Dealer's sole remedy shall be such repair or replacement as is expressly provided above; and under no circumstances shall ADJ Products, LLC be liable for any loss or damage, direct or consequential, arising out of the use of, or inability to use, this product.

This warranty is the only written warranty applicable to ADJ Products, LLC Products and supersedes all prior warranties and written descriptions of warranty terms and conditions heretofore published.

MANUFACTURER'S LIMITED WARRANTY PERIODS:

- **Lighting Products= 1-year (365 days) Limited Warranty** (Such as: Special Effect Lighting, Intelligent Lighting, UV lighting, Strobes, Fog Machines, Bubble Machines, Mirror Balls, Par Cans, Trussing, Lighting Stands etc. excluding LED and lamps)
- **Laser Products= 1 Year (365 Days) Limited Warranty** (excluding laser diodes which have a 6 month limited warranty)
- **LED Products= 2-year (730 days) Limited Warranty** (excluding motors, PCB boards, and power supplies, which have a 1-year (365 day Limited Warranty) batteries which have a 180 day limited warranty). Only the LEDs carry a 2-year warranty (**excluding StarTec Series, which carries a 1 Year Limited Warranty**) **Note: 2 Year Warranty only applies to purchases within the United States.**
- **ADJ DMX Controllers= 2 Year (730 Days) Limited Warranty** (excluding faders and tact switches)

Optical

- Light Source: 7 (40) Watt quad RGBW LED
- Life Expectancy: 50,000 hrs LED
- Beam Angle: 5~55-degree
- Refresh Rate: 1.2KHz

Specifications

- Pan & Tilt Range: 630 ~degree/Tilt 270-degree
- Colors: 64 built in color macros
- Dimming: Electronic
- Shutter: Electronic
- Zoom: Motorized 5° - 55°
- Operational Modes: 2 modes Program / DMX
- Flicker Free: Yes
- Wifly EXR Wireless DMX Range: 2,500 feet (line of site)
- Wifly On/Off
- Dimensions (LxWxH): 11.75" x 8 x 15.75"/300x200x400mm
- Weight: 19 lbs/8.5 kgs.

Connections

- Locking power In/Out
- Daisy chain 3 units @110V, 5 units @220V
- Data: 3 & 5-pin In/Out DMX
- With Wired Digital Communication Network

Control

- Control Protocol: DMX
- DMX Modes: 2, RDM (Remote Device Management)
- On Board: LCD menu with 180 inverse
- 16 Selectable WiFLY Address Channels

Electrical

- Input Voltage: 305W V.50Hz/60Hz
- Power draw @120V: 2.54 amp
- Power draw @ 220V: 1.39 amp

Certifications

- Certifications: ETL Approved
- IP Rating: IP20, dry place, no liquids

Whats Included

- Omega bracket
- Locking power to Edison cable
- User Manual

Follow Us On:

facebook.com/americanadj
twitter.com/americanadj
youtube.com/adjlighting

ADJ Products, LLC 6122 S. Eastern Ave. Los Angeles, CA 90040 USA Tel: 323-582-2650 / Fax: 323-725-6100 Web: www.adj.com / E-mail: info@adj.com
A.D.J. Supply Europe B.V.
Junostraat 2
6468 EW Kerkrade
The Netherlands
support@adj.eu / www.adj.eu Tel: +31 45 546 85 00 /
Fax: +31 45 546 85 99

